

TIPS FOR ENJOYING THE CONSERVATION AREA



This conservation site strives to protect natural resources, including the native plants, animals and water of Lake County while providing for low impact recreational opportunities.

- Park is open daily from dawn to dusk. We invite you to hike, bike & ride horses along designated routes. Site maps are located at information kiosks.
- Please be respectful of the site's natural resources and amenities and be mindful of your impacts.
- Please help keep the park clean and safe. Carry out any trash that you bring in.
- ▲ All other uses yield to horses.
- ▲ For your safety and theirs, PLEASE remain aware of your surroundings and observe wildlife from a distance –**Help Keep Them Wild and Alive.**
- ▲ Be aware that trails might have uneven or unstable terrain.
- Please refrain from damaging native plants or plant parts, disturbing wildlife.
- Camping, fishing, swimming, hunting, and metal detecting are prohibited.
- Motorized or electric vehicles are prohibited on the trails.
- Pets are NOT allowed for the safety of all animals.
- No releasing of domestic or wild animals into the park/preserve.



PUBLIC LANDS MANAGEMENT PROGRAM

The Florida Communities Trust (FCT) funded 75 percent of the land acquisition. FCT is a program housed within the Florida Department of Environmental Protection. The remaining 25 percent of this scenic corridor's purchase price was funded through a partnership between the Lake County Board of County Commissioners and Lake County Water Authority.

To date, more than 3,400 acres have been incorporated into the Public Lands Management Program which was established in September 2005 to protect drinking water, improve water quality of rivers and lakes, protect open space and provide recreation areas.

A site's passive recreational opportunities and restoration activities are driven by the natural and cultural resources and threats to these resources.

For passive recreation opportunities that are unique to each property, please visit: Ellis Acres Reserve, Ferndale Preserve, Green Mountain Scenic Overlook & Trailhead, Lake May Reserve, Pasture Reserve, PEAR Park Wildlife Conservation Area, Pine Meadows Conservation Area and Neighborhood Lakes Scenic Trail & Trailhead.

For more information about Parks and Trails please visit: www.lakecountyfl.gov/parks



Office of Parks and Trails

2401 Woodlea Road, Tavares, FL 32778

352-253-4950

Mon.-Fri. 8 a.m. to 5 p.m.

Rev. 03/31/22

L A K E
C O U N T Y

FERNDALE
PRESERVE

TRAIL MAP



**THIS SITE IS FEDERALLY
PROTECTED BY THE
NATIONAL HISTORIC
PRESERVATION ACT**
(NHPA: Public Law 89-665; 16 U.S.C. 470et seq.)
**REMOVAL OR DAMAGE OF ARTIFACTS
FROM THIS SITE IS A FELONY
VIOLATION AND SUBJECT TO FINES
UP TO \$5000.00**

19220 COUNTY ROAD 455, FERNDALE, FL

WELCOME



Located on the western shore of Lake Apopka, Ferndale Preserve is a 192-acre conservation and restoration area consisting of upland and wetland ecosystems.

Ferndale Preserve is home to over 180 species of birds and more than 50 butterfly species. A variety of other animals such as the rough green snake, bobcat, gopher tortoise, Florida softshell turtle, box turtle, Eastern coachwhip snake, coyote, otter, and American alligator may be found utilizing the habits found here.

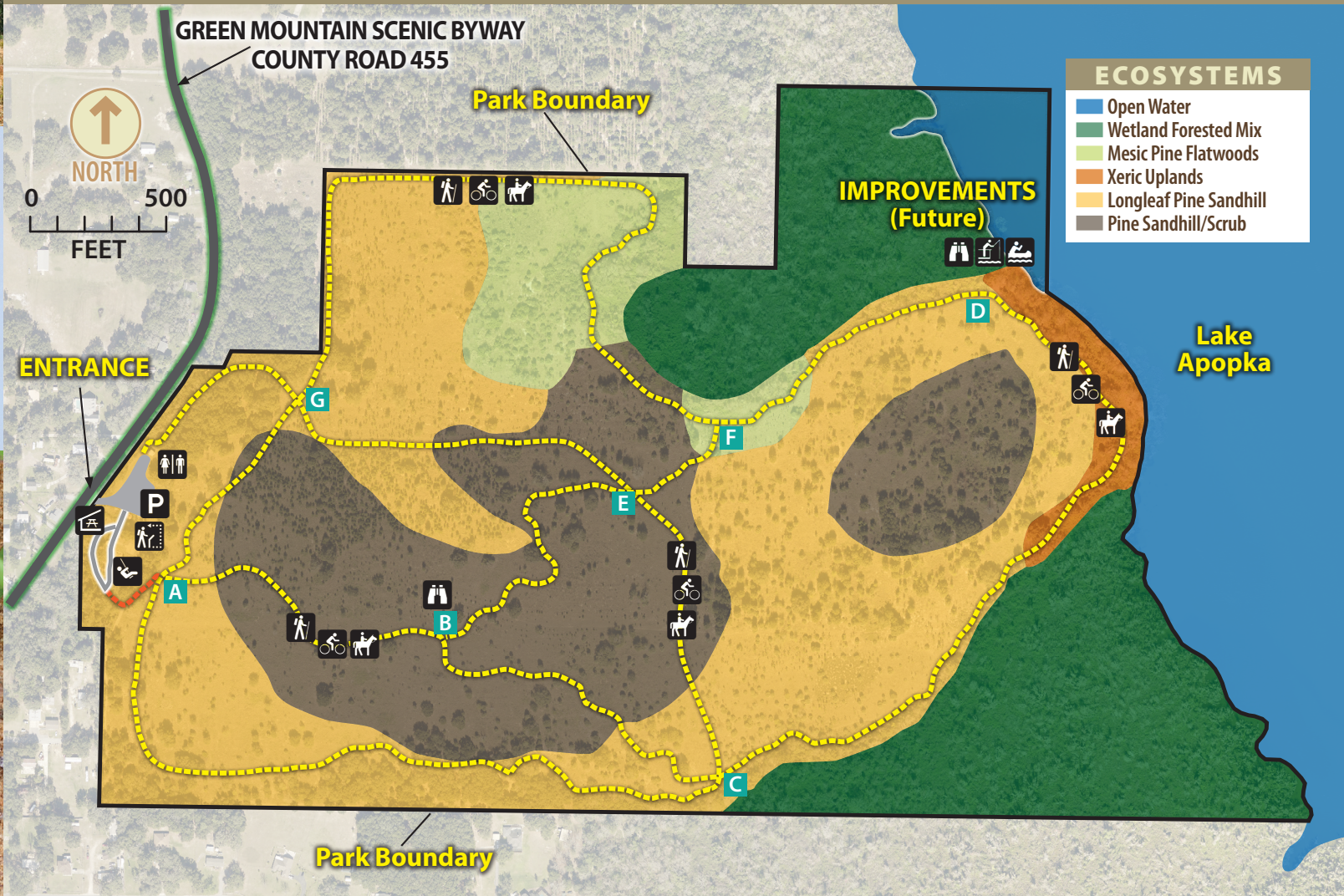
The preserve has a rolling topography, with elevations of 165 feet above sea level, affording visitors ever-changing scenic vistas along the trail routes. The approximately 4-mile trail is multi-use and popular with hikers, mountain bikers and equestrians. All users yield to horses.

Prior to human disturbance, the sandy upland plant communities of scrub, sandhill and flatwoods would have been found here. Years of intensive agricultural farming left only remnants of vegetation. Approximately 50 acres is considered wetland based on soils, hydrology and vegetation. These areas can be found along the lakeshore and the lowest elevations along both the northeast and south-east boundaries.

The cultural and natural history of Ferndale Preserve, as well as a description of the restoration process are depicted in the educational panels displayed under the pavilion near the entrance.



Ferndale Preserve



SITE DIRECTORY

- P** Parking
- Information
- Fishing
- Hike/Bike /Equestrian Trail
- Restroom
- Playground
- Canoe Launch
- Hike Trail
- Pavilion
- Observation
- Information
- Pavers (no bikes/horses)
- A** Trail Intersection

TOTAL ACRES: 192



MASTER SITE PLAN: Rev. 03/31/22