

WELCOME

to the Palatlakaha Environmental and Agricultural Reserve (PEAR) Park. PEAR Park is located along the Palatlakaha River and encompasses 318 acres. The park is divided into two distinct sections consisting of the Passive Recreation Wildlife Conservation Area (WCA) and the 'Gateway', which is a combination of Active Recreation and natural areas.

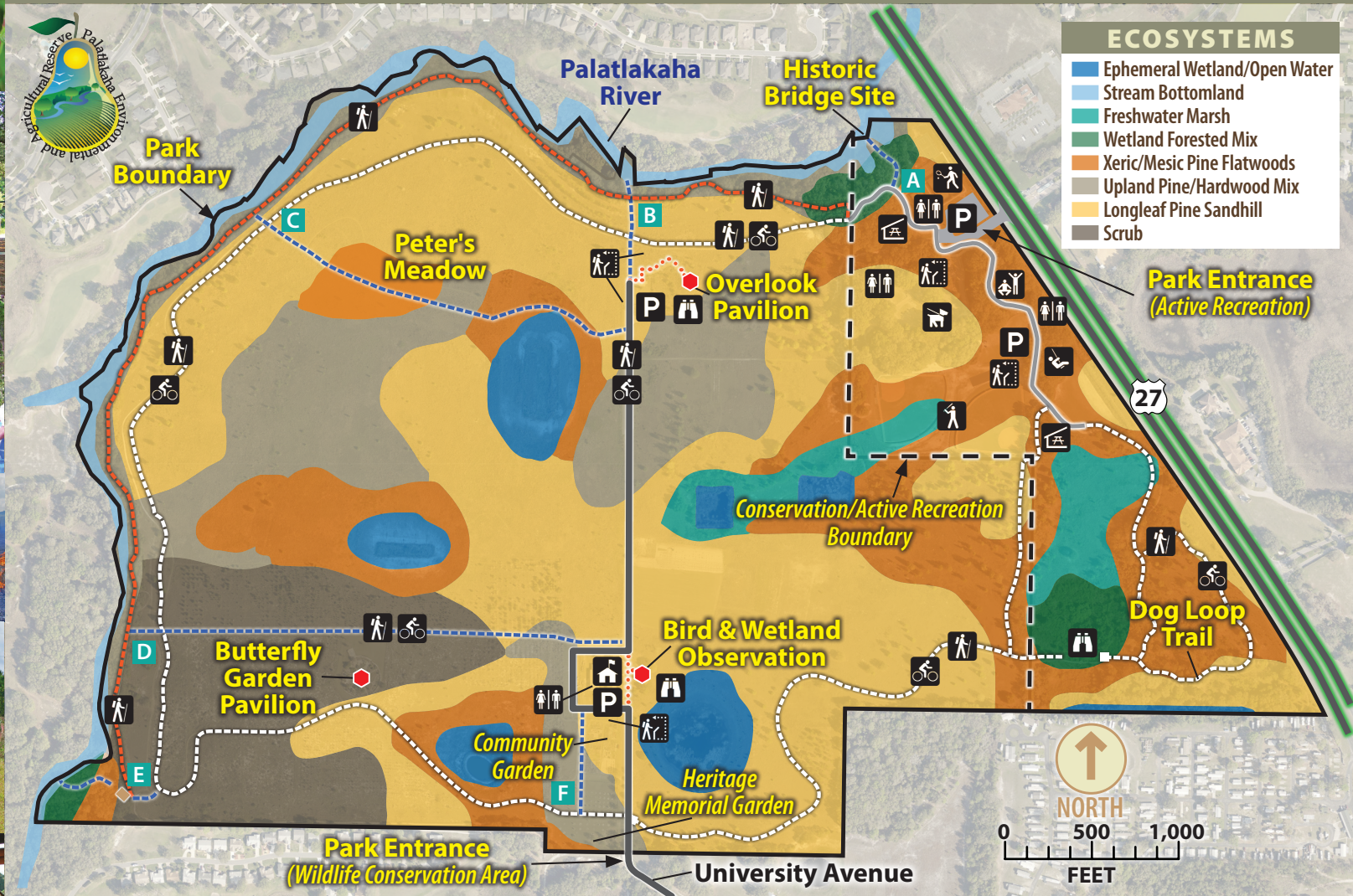
In the past, the land was used for timber resources and grazing cattle as well as an experimental agricultural research station operated by the University of Florida beginning in 1929. During its 71 years of operation, the station conducted numerous studies on plant breeding and pathology. Although most of the agricultural activities have been discontinued, the Orvel J. Walter Heritage Grape Arbor remains.

Prior to timbering and agriculture, the soils and elevation supported a mix of upland and wetland native ecosystems. Natural communities' restoration activities include invasive non-native species removal, native species plantings and the reintroduction of prescribed fire.

Approximately 6 miles of hiking trails wind through the mixed landscape of recreation and restoration areas. A variety of interpretive kiosk areas and pavilions provide overlook and educational opportunities.



P.E.A.R. Park



Information



Parking



Restroom



Picnic Pavilion



Hiking Trail



River Trail



Paver Trail



Connector Trails



Dog Park



Fields / Courts



Nature Center



Observation Pavilion

SITE DIRECTORY

TOTAL ACRES: 318



MASTER SITE PLAN: Rev. 08/21/20

TIPS FOR ENJOYING THE CONSERVATION AREA



This conservation site strives to protect natural resources, including the native plants, animals and water of Lake County while providing for low impact recreational opportunities.

- We invite you to hike and bike along designated routes. Site maps are located at information kiosks.
- Please refrain from damaging native plants or plant parts, disturbing wildlife, camping, fishing, swimming or metal detecting.
- ▲ For your safety and theirs, PLEASE remain aware of your surroundings and observe wildlife from a distance –**Help Keep Them Wild and Alive.**
- Please be respectful of the site's natural resources and amenities and be mindful of your impacts.
- Please help keep the park clean and safe. Carry out any trash that you bring in.
- Motorized or electric vehicles are prohibited on the trails.
- ▲ Pets are only allowed in the designated areas of Dog Park and Dog Loop Trail.
- ▲ Be aware that trails might have uneven or unstable terrain.



PUBLIC LANDS MANAGEMENT PROGRAM

Palatlakaha Environmental and Agricultural Reserve (P.E.A.R.) Park is a 318-acre property.

The westernmost 268 acres are within unincorporated Lake County and is known as the Wildlife Conservation Area (WCA); this portion of PEAR Park was leased to Lake County from the State of Florida for 50 years beginning March 29, 2001, per a lease agreement.

The front 50-acre portion of the park, known as the PEAR Park "Gateway," is in the City of Leesburg. It was purchased on January 31, 2005 with 75% of the funds made available by the Florida Communities Trust (FCT). FCT is a program housed within the Florida Department of Environmental Protection.

To date, more than 3,400 acres have been incorporated into the Public Lands Management Program which was established in September 2005 to protect drinking water, improve water quality of rivers and lakes, protect open space and provide recreation areas.

A site's passive recreational opportunities and restoration activities are driven by the natural and cultural resources and threats to these resources. For passive recreation opportunities that are unique to each property, please visit: Ellis Acres Reserve, Ferndale Preserve, Green Mountain Scenic Overlook & Trailhead, Lake May Reserve, Pasture Reserve, PEAR Park Wildlife Conservation Area and Pine Meadows Conservation Area.

For more information about Parks and Trails please visit: www.lakecountyfl.gov/parks



Office of Parks & Trails

2401 Woodlea Road, Tavares, FL 32778

352-253-4950

Mon.-Fri. 8 a.m. to 5 p.m.

Rev. 05/19/21

L A K E
C O U N T Y

P.E.A.R. PARK
R E S E R V E

Palatlakaha Environmental &
Agricultural Reserve (P.E.A.R.)



P.E.A.R. Park - Wildlife Conservation Area
4800 University Blvd, Leesburg, FL
P.E.A.R. Park - Gateway
26701 US Hwy 27, Leesburg, FL