



LAKE COUNTY
FLORIDA

INTERGOVERNMENTAL COORDINATION ELEMENT

Data, Inventory & Analysis

2030 Planning Horizon

TABLE OF CONTENTS

| | |
|--|-----------|
| DATA, INVENTORY & ANALYSIS | 1 |
| INTRODUCTION | 1 |
| BACKGROUND | 1 |
| ASSESSMENT OF EXISTING INTERGOVERNMENTAL COORDINATION MECHANISMS | 1 |
| SERVICE PROVISION | 1 |
| Education..... | 1 |
| Sanitary Sewer..... | 2 |
| Public Safety..... | 2 |
| Solid Waste | 3 |
| Stormwater | 3 |
| Potable Water | 4 |
| Parks and Recreation | 4 |
| Transportation Facilities..... | 5 |
| JOINT PLANNING AREA AGREEMENTS AND LOCAL COORDINATION | 5 |
| Lake County Water Authority (LCWA)..... | 6 |
| Lake County School Board | 6 |
| FEDERAL COORDINATION | 6 |
| United States Environmental Protection Agency (EPA) | 6 |
| Federal Emergency Management Agency (FEMA)..... | 7 |
| United States Army Corps of Engineers | 7 |
| The United States Department of Housing and Urban Development (HUD)..... | 7 |
| Federal Transit Administration (FTA) | 8 |
| United States of America Department of the Navy | 8 |
| STATE COORDINATION | 9 |
| Florida Department of Community Affairs (DCA)..... | 9 |
| Florida Department of Transportation (FDOT)..... | 10 |
| Florida Department of Environmental Protection (FDEP) | 10 |
| Florida Department of Health (FDOH) | 10 |
| Florida Public Service Commission (FPSC) | 11 |
| Florida Highway Patrol (FHP)..... | 11 |
| Florida Department of Forestry (FDOF)..... | 11 |
| REGIONAL COORDINATION | 16 |

| | |
|--|-----------|
| Lake-Sumter Metropolitan Planning Organization (LSMPO)..... | 16 |
| St. John River Water Management District (SJRWMD)..... | 16 |
| Southwest Florida Water Management District (SWFWMD)..... | 17 |
| ADJACENT COUNTIES | 17 |
| INTERGOVERNMENTAL COORDINATION EFFECTIVENESS | 17 |
| DATA TABLES | 18 |
| APPENDIX A..... | 41 |
| LAKE COUNTY PUBLIC SAFETY CHARTS AND MAP | 41 |
| LAKE COUNTY FIRE RESCUE MUTUAL SUPPORT AGREEMENTS | 43 |
| LAKE COUNTY FIRE RESCUE STAFFED STATIONS | 44 |
| Public Safety Communication Network Map | 46 |
| APPENDIX B..... | 47 |
| UNITED STATES OF AMERICA DEPARTMENT OF THE NAVY - DATA AND MAPS..... | 47 |
| History and Mission..... | 49 |
| Environmental Analysis..... | 50 |
| Changes | 51 |
| Public Safety..... | 52 |
| Public Involvement..... | 53 |
| APPENDIX C..... | 55 |
| WILDFIRE OCCURRENCE MAPS..... | 55 |
| North Eastern Lake County Wildfire Occurrence Map | 57 |
| Central Lake County Wildfire Occurrence Map | 58 |

LIST OF TABLES

| | |
|--|-----------|
| Table 1 – Central Lake County Fires by Township/Range 2004-2009 | 15 |
| Table 2 – North Eastern Lake County Fires Caused by Township/Range 2004-2009..... | 15 |
| Table 3 – Municipalities and Special Districts..... | 18 |
| Table 4 – Existing and Proposed Interlocal Agreements within Lake County | 21 |

INTRODUCTION

Intergovernmental coordination is essential in the growth management process since many of the impacts associated with growth do not adhere to jurisdictional boundaries. The intent of this element is to identify the issues and agencies where coordination is essential for effective growth management. State law mandates intergovernmental coordination. The Florida Growth Management Act requires all comprehensive plans to be internally consistent and vertically compatible: local plans must be consistent with and further the Strategic Regional Policy Plan (SRPP); the SRPP, in turn must be consistent with and further the State Comprehensive Plan. Other applicable provisions of law include: Section 163.33171, F.S. relating to joint agreements; Section 235.192, F.S. relating to local authority to review proposed school site plans; and Chapter 163 F.S. provision that all State and other government development activities must be compatible with the local comprehensive plans unless such development is exempt.

Please note that though this element attempts to give a broad overview of the various elements within the comprehensive plan, specific information on Water, Sewer, Transportation, Solid Waste, Parks and Recreation, Education, Stormwater, etc. can be found in their respective element.

BACKGROUND

Lake County covers an area of 1,156 square miles and includes fourteen municipalities: Astatula, Clermont, Eustis, Fruitland Park, Groveland, Howey-in-the-Hills, Lady Lake, Leesburg, Mascotte, Minneola, Montverde, Mount Dora, Tavares, and Umatilla.

At present, twenty-three special districts exist in Lake County. Table 1 provides a listing of these special districts, as well as the municipalities. Each jurisdiction and special district provided a comprehensive inventory of its existing and proposed interlocal agreements and furnished information for the narrative portion of this report.

ASSESSMENT OF EXISTING INTERGOVERNMENTAL COORDINATION MECHANISMS

The utilization of interlocal agreements is a major component of formal intergovernmental coordination within Lake County. Table 2 details the existing and proposed interlocal agreements in the eight relevant service areas for the County, its municipalities, and applicable service districts.

SERVICE PROVISION

The public services with which this report is concerned – education, sanitary sewer, public safety, solid waste, drainage, potable water, parks and recreation, and transportation facilities – are provided to the citizens of Lake County through the following mechanisms:

Education

The Lake County School Board is the provider of public Pre-K through 12th grade education in Lake County. Pursuant to legislative requirements of Sections 163.31777(1)(d) and 1013.33(2)(d), Florida Statutes, the County and the fourteen municipalities have partnered with the School Board to develop and execute an interlocal agreement for public school facility planning. Adopted on December 8, 2003 and revised December 26, 2007, this agreement

covers student enrollment and population projections; the coordination and sharing of information; and school site selection, significant renovations, and potential closures. In addition, the agreement deals with the issues of supporting infrastructure; school capacity; the initiation of the School District's Five-Year School Plan Survey and the annual update of the District Facilities Five-Year Work Program; the co-location and shared use of facilities; conflict resolution; the oversight process and public participation; and the School Board's involvement with local planning agencies.

Sanitary Sewer

At the present time, Lake County does not provide sanitary sewer service to its citizens. Eight of the fourteen municipalities (Clermont, Eustis, Groveland, Mount Dora, Lady Lake, Leesburg, Tavares, and Umatilla), own and operate wastewater systems to serve the needs of their residents. These municipalities also provide sanitary sewer service to those portions of the unincorporated County that lie within their current service areas. In addition, the unincorporated community of Astor maintains its own wastewater system.

Several private utility companies, including Lake Utilities, Inc. and Southlake Utilities, Inc. provide sanitary sewer service to the individual developments with whom they contract. Some of the larger developments own and operate their own wastewater systems. The remainder of the municipalities and the majority of the unincorporated areas of the County still rely on on-site septic systems for the treatment of waste.

Public Safety

The delivery of law enforcement, fire protection, and emergency medical services is achieved through a network of interlocal agreements. Each of the municipalities, with the exception of Minneola and Montverde, operates a police department. The Lake County Sheriff's Office primarily serves the unincorporated areas of the County, as well as Minneola and Montverde, with whom they contract. On October 25, 2001, the Sheriff's Office and the municipal police departments adopted a combined voluntary cooperation and operational assistance mutual aid agreement to ensure the adequate provision of law enforcement services throughout the County. In addition, the County and several of the municipalities maintain mutual aid agreements with adjacent counties. A table showing Lake County Fire Rescue Mutual Aid Agreements with Municipalities is attached under Appendix A.

Ten municipalities – Clermont, Eustis, Fruitland Park, Groveland, Leesburg, Mascotte, Minneola, Montverde, Mount Dora, Tavares, and Umatilla – presently operate fire departments. These municipalities maintain various mutual aid agreements with Lake County and one another, as well as with adjacent counties. Lake County Fire/Rescue primarily serves the unincorporated portions of the County, as well as the municipalities of Astatula, Howey-in-the-Hills, and Lady Lake. A table showing the location of Lake County Fire Rescue Staffed Stations is attached under Appendix A. The fire departments of Leesburg and Mount Dora are staffed entirely by paid firefighters, while those of the County and the cities of Clermont, Eustis, Groveland, Mascotte, and Tavares are comprised of a combination of paid employees and volunteers. The fire departments of Fruitland Park, Montverde, and Umatilla are manned fully by volunteer firefighters. A map showing the Lake County Public Safety Communication Network is attached under Appendix A.

A government-owned, bi-county corporation, Lake-Sumter EMS, Inc., provides emergency medical service and ambulance transportation to the citizens of Lake County and its neighbor to the west,

Sumter County. In addition, the County and each of the municipalities maintain a mutual aid agreement with the State of Florida for disaster relief.

Solid Waste

The Solid Waste Management Division of the Lake County Department of Environmental Services assumes the lead role in managing the waste generated in the unincorporated areas of Lake County. Lake County presently maintains the County landfill and operates six drop-off facilities that accept residential waste and recyclables, electronic waste, and hazardous waste. The Solid Waste Management Division also sponsors mobile waste collection events throughout the County. Lake County contracts with several private local haulers for the provision of residential garbage collection and curbside recycling service. With the exception of the cities of Leesburg, Mascotte, and Tavares, who own and maintain their residential refuse collection services, the remainder of the municipalities' contract with private local haulers.

In working to achieve its objectives, the County partners with the Florida Department of Environmental Protection for recycling and other waste management projects. It also enters into interlocal agreements with the various municipalities to ensure that the cities' solid waste collection needs, apart from those related to residential garbage pickup, are met.

Lake County signed a waste disposal agreement with Covanta Lake II, Inc., a subsidiary of Covanta Energy Corporation in December 2004. The 528-ton-per-day waste-to-energy facility is located in Okahumpka, Florida. The agreement provides that Covanta Lake will provide disposal service to the County through 2014 for its non-recycled municipal solid waste.

Stormwater

The Engineering Division of the Lake County Department of Public Works is responsible for stormwater management and drainage issues for the unincorporated areas of the County. The County has embarked on an ambitious stormwater management program to ensure the protection of the region's lakes, rivers, wetlands, and other environmentally-sensitive areas. The Department of Public Works is currently focusing its stormwater and drainage engineering efforts on such areas as the Lake Griffin basin and the Lake Minnehaha basin. Through the Total Maximum Daily Loads (TMDL) program, the following goals are expected to be accomplished: (1) cleaner water through more collaborative restoration efforts with increased public involvement; (2) better use of science to understand the human activities affecting water resources in specific locations and cumulatively throughout our watersheds; (3) better protection for water bodies as people give more attention to preventing and reducing human impacts on water resources; and (4) TMDLs will be developed, allocated, and implemented through a watershed-based management approach (managing water resources within their natural boundaries) that addresses the state's 52 major hydrologic basins, organized into five groups and managed by the water management districts.

In addition, the County is presently engaged in upgrading and replacing aged, degrading infrastructure and improving water quality throughout the County. Furthermore, Lake County has entered Phase II of the National Pollutant Discharge Elimination System (NPDES). In working to achieve its objectives, the Stormwater Management Division frequently partners with the Lake County Water Authority, the St. Johns River Water Management District, the Florida Department of Environmental Protection, and the Water Resources & Environmental Programs Division of the Lake County Department of Environmental Services.

Similarly, the County's fourteen municipalities are occupied with drainage issues. Each municipality possesses a public works division whose duties include stormwater management. They, too, execute interlocal agreements with the various regulatory agencies to ensure the protection of their environmental resources. At present, the City of Clermont is partnering with the Lake County Water Authority on two undertakings: the Crystal Lake stormwater project and the Center Lake stormwater retrofit project, and the City of Eustis is working with the same agency on the Eustis and Ward stormwater project. The City of Groveland currently is participating in the St. Johns River Water Management District's stormwater cost-share program which allocates annual cost-share funding for local governments to support stormwater management efforts that contribute toward the improvement of water quality by achieving pollutant load reduction goals (PLRGs) or total maximum daily load (TMDL) allocations for identified priority pollutants.

Potable Water

At the present time, Lake County does not provide potable water to its citizens; however, each of the municipalities, with the exception of Astatula, owns and operates a water system. These municipalities also provide potable water to those portions of the unincorporated County that lie within their current service areas. In addition, the unincorporated community of Astor maintains its own water system.

Several private utility companies, including Lake Utilities, Inc. and Southlake Utilities, Inc. provide potable water to the individual developments with whom they contract. Some of the larger developments own and operate their own water systems. Astatula and the majority of the unincorporated areas of the County still rely on private wells to serve their water needs.

Parks and Recreation

The Parks and Trails Division of the Lake County Department of Public Works develops and operates a network of 38 public parks and recreational facilities throughout the County, which total approximately 926 acres. They also develop, operate and maintain environmental lands, trails, and other recreational areas. In September 2003, the County was the recipient of a grant from the Florida Communities Trust for the construction of amenities and the installation of landscaping at the newly created Palatlahaha Environmental and Agricultural Reserve (PEAR) Gateway. In addition, the County completed a countywide parks master plan in March of 2004 and adopted the Lake County Trails master Plan on September 16, 2008.

The Lake County Water Authority also plays a significant role in the provision of recreational facilities throughout the County. The Water Authority operates the multi-use Hickory Point recreation facility and provides recreational amenities to the citizens of and visitors to Lake County through the protection and enhancement of the area's lakes, streams, and canals. To achieve their results, Lake County and the Water Authority partner with various state and local agencies to meet the recreation needs of the County.

The fourteen municipalities also play a crucial role in the provision of recreational facilities in Lake County through the design and maintenance of parks and community centers and through the sponsorship of a wide variety of organized programs for children, teens, and adults. As the inventory of agreements shows, the municipalities have entered into partnerships with various State and County agencies to meet the recreation needs of the growing area population.

Transportation Facilities

The Lake-Sumter Metropolitan Planning Organization (MPO) was established on Feb. 25, 2004, after the 2000 U.S. Census determined the urbanized areas around Leesburg, Eustis and Lady Lake had exceeded a population of 50,000.

The MPO directs urban transportation planning in Lake and Sumter County and the allocation of federal and state funds. The MPO is the primary agency to recommend and implement Lake and Sumter County's long-range and short-range transportation plans, transportation improvement programs, and unified planning work programs to ensure that the county's transportation facilities and services meet the needs of all people and all modes of transportation.

Lake County's 2025 Long-Range Transportation Plan (LRTP) was adopted by the Lake-Sumter MPO in December 2005. This document provides a comprehensive statement of the transportation needs and policies of the County and serves as a framework for the orderly development of an efficient, affordable multi-modal transportation system. This plan addresses the provision of highways, public transportation, bicycle and pedestrian facilities, and linkages between these modes to ensure a coordinated transportation system. An updated 2035 LRTP is expected to be adopted in Fiscal Year 2009-2010.

The Road Operations Division of the Lake County Public Works Department is responsible for the maintenance and signage of the County's arterial, collector, and local roads. The County currently maintains numerous interlocal agreements with the Florida Department of Transportation, adjoining counties, and various municipalities relating to road, lighting, and traffic signal installation and maintenance. The County's Bicycle and Pedestrian Facilities section works to make a countywide network of rail trails, multi-use pathways, on-road bicycle facilities and sidewalks a reality.

Like the County, the municipalities are responsible for the upkeep of the roads within their respective jurisdictions and for the provision of alternative transportation systems. They also enter into partnerships with FDOT, the County, and one another for projects relating to new construction and maintenance of lighting, traffic control devices, and roads and pathways.

JOINT PLANNING AREA AGREEMENTS AND LOCAL COORDINATION

In addition to the eight community service categories specified in Section 163.3177(6)(h), Florida Statutes, Lake County is presently engaged in a joint planning process with each of the fourteen municipalities for the purpose of addressing intergovernmental coordination issues. Through the mechanism of joint planning, the County and municipalities hope to ensure compatible and desirable land uses and to foster inter-jurisdictional communication to provide for healthy, well-planned growth. Lake County currently has two Joint Planning Area Agreements (JPA). The JPA with the City of Clermont was approved on September 23, 2003, and the JPA with the City of Mount Dora was approved on August 23, 2004. JPAs with Lady Lake, Groveland, and Montverde are in the process of being developed. Dialogue has been initiated with the remaining municipalities and tentative joint planning boundaries have been drawn, although they have not yet been approved by their respective city councils. Lake County and the fourteen municipalities, through formal and informal processes, closely coordinate to address growth management, environmental, and public facility issues.

Lake County Water Authority (LCWA)

The Lake County Water Authority (LCWA) works to control and conserve the freshwater resources of Lake County by fostering and improving the tourist business in the county by improvements to streams, lakes, and canals; provide recreational facilities for tourists, citizens, and taxpayers by establishing a more efficient use of streams, lakes, and canals; improve the fish and wildlife of the county; and protect the freshwater resources of Lake County through assisting local governments in the treating of stormwater runoff.

Lake County School Board

In September 2005, Lake County was selected as a pilot community for the state's new school concurrency initiative. The School Concurrency requirement for all counties, municipalities, and school boards across the state of Florida, is a result of the approval of Senate Bill 360. The bill overhauls the state's growth management laws. Commonly referred to as the "pay-as-you-grow plan", the bill dedicates new funding and stipulates policies that, when implemented, will help to ensure that the school needs of communities are met.

Through the Public School Facilities Sub-Element and accompanying Interlocal Agreement, Lake County has formally established processes for coordination with the Lake County School Board and the municipalities to implement school concurrency.

FEDERAL COORDINATION

Lake County currently coordinates with various federal agencies on issues such as emergency management and environmental protection. The following are some of the federal agencies coordinating with Lake County:

United States Environmental Protection Agency (EPA)

The United States Environmental Protection Agency (EPA) works to protect human health and to safeguard the natural environment including the air, water, and land, thereby protecting the natural resources on which life depends. The EPA works closely with other federal, state, and local governments and agencies to develop and enforce regulations under existing environmental laws.

The EPA works to develop and enforce regulations that implement environmental laws enacted by Congress. The Agency is responsible for researching and setting national standards for a variety of environmental programs, and delegates to states the responsibility for issuing permits and for monitoring and enforcing compliance. Where national standards are not met, the Agency can issue sanctions and take other steps to assist the states in reaching the desired levels of environmental quality.

The EPA works through its headquarters and regional offices with over 10,000 industries, businesses, non-profit organizations, and state and local governments, on over 40 voluntary pollution prevention programs and energy conservation efforts. Partners set voluntary pollution-management goals; examples include conserving water and energy, minimizing greenhouse gases, slashing toxic emissions, re-using solid waste, controlling indoor air pollution, and getting a

handle on pesticide risks. In return, the Agency provides incentives like vital public recognition and access to emerging information.

Federal Emergency Management Agency (FEMA)

Lake County coordinates with county, municipal, state and federal agencies, such as the Federal Emergency Management Agency (FEMA), to provide protection to lives and property from natural, technological and man-made disasters.

On February 28, 2003, President Bush issued Homeland Security Presidential Directive-5. HSPD-5 directed the Secretary of Homeland Security to develop and administer a National Incident Management System (NIMS). NIMS provides a consistent nationwide template to enable all government, private-sector, and nongovernmental organizations to work together during domestic incidents. Lake County encourages employees that work in the Emergency Operations Center (EOC) to take the NIMS course to familiarize themselves with the key concepts and principles underlying NIMS.

On March 1, 2003, the Federal Emergency Management Agency (FEMA) became part of the U.S. Department of Homeland Security (DHS). FEMA's continuing mission within the new department is to lead the effort to prepare the nation for all hazards and effectively manage federal response and recovery efforts following any national incident. FEMA also initiates proactive mitigation activities, trains first responders, and manages the National Flood Insurance Program.

United States Army Corps of Engineers

The U.S. Army Corps of Engineers carries out environmental and natural resource management programs; infrastructure improvements; and a myriad of other duties. Lake County coordinates with the U.S Army Corps of Engineers for a variety of different needs, which include emergency management and natural resource management.

The United States Department of Housing and Urban Development (HUD)

The U.S. Department of Housing and Urban Development's (HUD) mission is to increase homeownership, support community development and increase access to affordable housing free from discrimination. It is their intent to be effective on the community level.

The Community Development Block Grant (CDBG) program is administered at the federal level by the U.S. Department of Housing and Urban Development, which makes funds available to local governments. Lake County became an entitlement community in 1999 and started receiving funds in 2000. The City of Tavares and the towns of Montverde, Astatula and Lady Lake receive a share of the entitlement dollars pursuant to Urban County Partnership Agreements with Lake County.

The Community Development Block Grant Division of the Department of Community Services administers the Lake County CDBG program. The Division is responsible for ensuring the funds are used to improve the living environment, quality of life and housing opportunities for low and moderate-income citizens. Since Lake County became a CDBG entitlement community, the County and its urban county partners have used CDBG funds for roadway paving and paving assessments, for housing rehabilitation, to expand meals-on-wheels deliveries and transportation

services to seniors, to provide prescription assistance, to improve community centers, sidewalks and a park, and to construct ADA-accessible restrooms and entrances in public buildings.

Federal Transit Administration (FTA)

FTA is one of ten modal administrations within the U.S. Department of Transportation. FTA functions through a Washington, DC, headquarters office, ten regional offices, and a number of metropolitan offices which assist transit agencies in all 50 states, the District of Columbia, Puerto Rico, the U.S. Virgin Islands, Guam, Northern Mariana Islands, and American Samoa.

Public transportation includes buses, subways, light rail, commuter rail, monorail, passenger ferry boats, trolleys, inclined railways, and people movers.

The Federal government, through the FTA, provides financial assistance to develop new transit systems and improve, maintain, and operate existing systems. FTA oversees thousands of grants to hundreds of state and local transit providers, primarily through its regional and metropolitan offices. These grantees are responsible for managing their programs in accordance with Federal requirements, and FTA is responsible for ensuring that grantees follow Federal mandates along with statutory and administrative requirements.

United States of America Department of the Navy

The U.S. Navy Pinecastle Range Complex (Range) Military Operations Area (MOA) is the special use airspace designated by the Federal Aviation Administration utilized by the U.S. Military for training and exercises overlying parts of northern Lake County and administered by the United States Navy.

Airspace contained within the Range consists of the Palatka 1 and Palatka 2 Military Operations Areas and Restricted Areas 2906, 2907A, 2907B, 2910, 2910 A, and 2910B.

Lake County shall protect the mission and the long-term viability of this military installation through the management of underlying future land uses.

Attached under Appendix B are informational slides that are **proposed drafts** within the Supplemental Environmental Impact Statement. Source: United States of America, Department of the Navy.

History

The Pinecastle Range was established in 1951 within the Ocala National Forest and has been in continuous use for 59 years. The Range encompasses 5,698 acres or 1 percent of the Ocala National Forest. The Navy operates under a Special Use Permit issued by the U.S. Forest Service.

Operations

Unit-Level Training (normal, single aircraft operation) is conducted up to 170 days per year.

Major Training Exercise (Battle Group Operation - multiple units training) is performed 2-3 weeks per exercise and there are 3-4 exercises per year.

Safety Zones – shown on **draft** exhibit in Appendix B

Unit Level Training Safety Zone
Major Training Exercise Safety Zone
Environmental Impact Statement Safety Zone

Public Safety

The following is a list of existing safety measures:

- Public announcements
- Public outreach
- Cooperation with the U.S. Forest Service
- Signs
- Gates
- Look-outs
- Road guards

The following is a list of proposed safety measures:

- Additional road guards along the Florida National Scenic Trail
- Enhance education of U.S. Forest Service staff to help ensure implementation of safety measures
- Conduct awareness training when permits (e.g. hunting) are issued

Environmental

In 2002, the Department of Navy completed an Environmental Impact Statement (EIS) and implemented mitigation measures to protect the wetlands, waterbodies and threatened and endangered species within the safety zones.

The Supplemental Environmental Impact Statement (SEIS) analyzed each environmental resource area discussed in the 2002 EIS. A copy of the draft SEIS is located at www.pinecastleseis.com

A draft slide, which overviews the EIS, Impact Assessment and Threatened and Endangered Species is attached under Appendix B.

STATE COORDINATION

Lake County, on a day to day basis, coordinates with numerous State of Florida Agencies in planning and community development; transportation; and environmental and natural resources. The following are descriptions of some of the state agencies coordinating with Lake County:

Florida Department of Community Affairs (DCA)

The Florida Department of Community Affairs (DCA) is the state's growth management agency, and is responsible for establishing comprehensive planning regulations. The DCA reviews all local

government comprehensive plans; comprehensive plan map and text amendments; and engages in various other duties to assist local governments in complying with state regulations. The DCA also oversees the Green Swamp Area of Critical State Concern (GSACSC), and reviews land use changes that are proposed within the GSACSC boundary. The Lake County Department of Growth Management works closely with the DCA on a regular basis.

Florida Department of Transportation (FDOT)

The Florida Department of Transportation (FDOT) has jurisdiction over state and federal roads in Lake County, including U.S. 441 and S.R. 50. In addition, FDOT has jurisdiction over the Florida Intrastate Highway System, which includes the Florida Turnpike.

FDOT determines the functional classification of roads within Lake County, and sets forth guidelines that are integrated into the Lake County Transportation Element. Moreover, FDOT has regulatory authority over their rights of way and surface water discharge into highway drainage systems.

The Lake-Sumter MPO (LSMPO) works closely with FDOT to coordinate federal and state transportation planning. FDOT representatives attend and actively participate in the LSMPO and its Technical Advisory Committee (TAC) meetings. Lake County Public Works also coordinates with FDOT and the LSMPO to address Lake County road improvements and other related issues.

Florida Department of Environmental Protection (FDEP)

The Florida Department of Environmental Protection (FDEP) protects Florida's land, water, and air resources. It is the lead agency in state government for environmental management and stewardship. The FDEP is divided into three primary areas: Regulatory Programs, Land and Recreation, and Planning and Management. In order to successfully fulfill their duties, the FDEP regulates industrial waste, hazardous waste, air pollution emissions, potable water treatment, solid waste disposal, sanitary sewage treatment, monitoring of wetlands during development, and the protection of environmentally sensitive areas. The Central District Office of the FDEP, which serves Lake and other Central Florida counties, is located in Orlando. Various Lake County Departments work closely with FDEP to effectively implement state regulatory guidelines. The FDEP issues permits on sewage systems greater than 5,000 gallons and also requires design approval on water systems serving populations greater than 25 employees.

Florida Department of Health (FDOH)

The Florida Department of Health (FDOH), through the county health department at the local level, works to detect and correct environmental dangers that can cause disease or injury. The FDOH offers a wide range of services provided through the environmental health section. Through public education, periodic inspection, investigation of complaints and enforcement of laws related to safety and sanitation, the FDOH staff helps Lake County maintain a healthy and safe environment.

The Lake County's branch of the FDOH has a well permitting program and an Interagency Agreement with the St Johns Water Management District to issue permits on wells that involve small community systems called Limited Use Water Wells. This section also carries out programs dealing with EDB (Ethylene Di-Bromide) contamination in old grove areas, other chemical contaminations of wells and the mapping of all wells using the GPS (Global Positioning Satellites)

system (Exact locations of wells using Satellites). The water services program also routinely inspects swimming pools and bathing places to reduce the transmission of waterborne illness and injuries to patrons.

The Onsite Sewage Treatment and Disposal Systems (OSTDS program) or septic tank systems are permitted and inspected by the environmental health staff. By state law these professionals must obtain Certification in the OSTDS program via training and testing of their knowledge of the Statutes and Rules established for their installation. This permitting and inspection ensures reliability and reduces the chances of pollution of ground and surface water supplies. The primary goal is to protect the public health by eliminating the potential for the spread of infectious disease, by protecting the ground and surface water from improperly built or maintained onsite sewage treatment and disposal systems. Lake County has been running second and third in the state in issuance of these permits.

The Lake County FDOH branches are located within the Lake County Administration Building and Clermont City Hall in South Lake County, and work closely with various departments to provide input on many other issues.

Florida Public Service Commission (FPSC)

The Florida Public Service Commission (FPSC) promotes the development of competitive markets – as directed by state and federal law – by removing regulatory barriers to competition, and by emphasizing incentive-based approaches, where feasible, to regulate areas that remain subject to rate of return regulation. Once markets become sufficiently competitive, the FPSC will eliminate regulatory involvement to the extent permitted by law. The FPSC fulfills this mission by pursuing goals to improve economic regulation, regulatory oversight, and service regulation and consumer assistance.

Florida Highway Patrol (FHP)

The Florida Highway Patrol is responsible for enforcing the traffic law of the State of Florida, providing information to the public, responding to inquiries from the statewide news media, conducting traffic safety programs for schools, churches, civic groups, military personnel, and other interested parties, and managing various highway safety grants received from the Florida Department of Transportation's State Safety Office. Lake County uses the Florida Highway Patrol as a resource for law enforcement.

Florida Department of Forestry (FDOF)

The County is, in partnership with the Division of Forestry and other state and local agencies, participating in the development and implementation of a Community Wildfire Protection Plan (CWPP) for Lake County, which will designate high-hazard fire areas and specify methods of reducing the hazards.

Wildfire Protection

Fire is an important and natural process for many of Florida's natural plant communities such as, but not limited to, pine flatwoods, sandhill, sand pine scrub, and xeric oak scrub. The use of prescribed fire is important to the continued health of these natural communities and improves their wildlife habitat value. The County shall encourage Best Management

Practices associated with native habitats, such as prescribed fires, and shall coordinate with the federal, state, and local agencies regarding management programs and policy.

The Lake County Local Mitigation Strategy (LMS) Plan ranked wildland fire and lightning (a primary wildfire causes) as their second greatest risk threat for over half of their incorporated jurisdictions and all unincorporated regions. Lake County is currently in the second revision stage of their LMS plan and developing strategies to address hazards identified within the plan.

Description of Community Wildfire History (2004-2009): (Source: Lake County Community Wildfire Protection Plan, 1st Draft).

Lake County has experienced increased drought conditions for the past five years and these conditions have been aggravated by increases in the occurrences and durations of hard winter freeze periods. Since these conditions have contributed to worse case fuel loadings, reduced fuel moisture content and prolonged increased wildland fire risk conditions, a five-year history from January 1, 2004 until January 1, 2009 was considered the most accurate representation of existing fuel load conditions and potential wildland fire mitigation needs. To better identify specific wildland fire occurrence rates by County regions, the wildland fire rates were plotted by individual township and range (TR) for this five-year period (attachment 5). It should be noted that this data does not include wildfire suppression actions taken by County and jurisdiction fire departments without DOF support. When these rates were charted (attachment 6), noticeable spikes in the occurrence rates for individual townships and ranges were noted for the northeastern region. An assessment of the County's communities at risk disclosed that the majority of medium to high risk communities were also located in the northeastern region. The remaining County townships and ranges were similarly assessed and classified as the County's central region. Composite maps of each region were then prepared with fuel types, at risk communities and wildfire occurrences rate plots to narrow the focus to specific township and range communities. These composites are provided in attachments 7 and 8. Each of these County wildland fire regions, northeastern and central will be separately discussed and the following subjects addressed:

1. Regional description
2. Major Fuel types
3. Wildland Fire Causes
4. Risk Assessment
5. Regions Communities at Risk (CARs)

NORTHEASTERN WILDLANDFIRE REGION

1. Regional Description: This region is comprised of the following townships and ranges: 15S/27E, 16S/27E, 16S/28E, 17S/27E, 17S/28E, 17S/29E, 18S/27E, 18S/28E, 18S/29E, 19S/27E, 19S/28E and 19S/29E. A broad geographical description would be the region northeast of Umatilla extending northeast and east to the St. Johns River and Volusia/Seminole County borders, west to the border with Marion County, and south to the border with Orange County. The majority of this area would be classified as rural with a preponderance of forest lands. The cities of Umatilla and Deland (in neighboring Volusia County) are the major urban centers for the region. There are numerous towns and villages with populations of less than 1000 such as Paisley, Lake Kathryn Heights, Cassia, Sorrento

and Mt. Plymouth. The majority are single-family dwellings with a large number of mobile home communities interspersed along State Road 42. Block stucco home communities are both in the south and south east portion. This region has the County's largest wildland urban interface area due to large tracts of undeveloped forest lands. Over half of the land area is within the Ocala National Forest. The Seminole State Forest, Lake Norris Conservation Area and the Wekiva River Preserve comprise the next largest tracts of forest lands.

2. Region Fuel Types. The major forest fuel types are Sandpine Scrub, Pine Flatwoods, Sandhills and some Hardwood Hammock. The western portion of the region south of State Road 42 is primarily upland-mixed forest and pasture. Transitioning to the east and southeast to the Wekiva River Eco System the fuels transition from Scrub and Sandhills to Flatwoods and River Basin Swamp. The heaviest fuel loads are primarily within the Ocala National Forest and Seminole State Forest, both of which have experienced moderate constraints on prescribed fire programs due to the past extended drought conditions.

3. Wildland Fire Causes: Data from the Florida Fire Management Information System (FMIS) was used to track the 5-year occurrence cause trends and disclosed a total of 142 recorded wildland fires within this region. This assessment also disclosed the greatest concentration of occurrence rates per township and range. The major causes identified resulted from human actions at 47% (escaped outdoor burns and arson) followed closely by lightning causes at 43% (see attachment 9).

4. Wildland Fire Risk Assessment: A regional wildfire risk assessment was completed specifically targeting these representative communities: Pittman, Sorrento, Royal Trails, Cassia, Lake Mack, Lake Kathryn and Deer Haven. The assessment was completed by the Withlacoochee Forestry Center's Wildfire Mitigation Specialist. The risk assessment for the entire Northeast region was a **High Risk** with the major contributing factors being: large percentage of WUI acreage, fuel types and loadings, structure types, construction techniques, wildland fire occurrence rates, pressurized water resources, and proper fire suppression equipment and manning availability. These factors are aggravated by increased outdoor burning practices as part of local culture in this rural region. This assessment is contained in attachment 10. A cross reference and validation of this assessment was made by a comparison to the Mapping for Emergency Management Parallel Hazards Information System (MEMPHIS) which reflects a high risk exposure threat for this regions communities (attachment 11)

5. Regional Communities At Risk. Thirty-five communities within Lake County are exposed to Medium or High wildland fire risks. Nineteen of the 35 are located within this region with 11 being rated at high-risk exposure, the greatest grouping of high-risk communities within the County (see attachment 7).

CENTRAL WILDLANDFIRE REGION:

1. Regional Description. This region is comprised of the following township and ranges; T18S/Ranges 24E-26E; T19S/Ranges 24E-26E; T20S/Ranges 24E-26E; T21S/Ranges 24E-26E; T22S/Ranges 24E-26E; T23S/Ranges 24E-26E and T24S/Ranges 24E-26E. The region contains the majority of the County's jurisdictions and has witnessed the greatest growth in urban and commercial development with resulting population growth. It also remains the region's largest area of agricultural operations.

2. Regional Fuel Types. This region is dominated by the majority of the County's surface waters. The majority of the regions wildland fuel types are agricultural and pasture grasslands, scrub with timber over story and some hardwood hammocks. Within proximity of the larger lakes are increased grass, shrub, and palmetto vegetation. The southwestern portion of the region transitions into the Green Swamp where increases in cypress swamps, palmetto/shrub loadings and denser pine over-story typically occur.

3. Wildland Fire Causes. The FMIS five-year wildfire data for this region disclosed a total of 184 wildfires had occurred. The greatest cause percentage was due to human actions at 58% and the region also has the greatest occurrence of miscellaneous, or unknown, causes at 27%. This data is presented in attachment 12.

4. Wildland Fire Risk Assessment: A regional wildland fire risk assessment was completed based on an assessment of the following representative communities: Lady Lake, Mascotte, Clermont, Groveland, Howey-In-The-Hills, Tavares, and Umatilla (borders the northeastern region). Most of this region would be classified as urban with a mixed low-to-medium wildland urban interface density. Most of the private and commercial structures are block, concrete or steel fabrication with large major and secondary road infrastructure. The majority of roads within this region are paved. All 14 of the County's jurisdictions are here. Eight have manned fire departments with mutual aid agreements with the County Fire Rescue. The overall wildfire assessment for this region was a **MODERATE RISK** that was primarily a function of: low hazardous fuel loads, moderate percentage of wildland interface, type of building construction, availability of pressurized and draft water sources and numbers of staffed fire/rescue stations and mutual aide agreements. Although the region has a greater occurrence rate of wildland fires than the north eastern region, it is primarily a factor of population density with the majority of incidents involving small acreage and rapid suppression response. The risk assessment is presented in attachment 13.

5. Regions Communities At Risk. Sixteen Communities are exposed to medium or high wildland fire threats, 11 of these communities are rated at medium risk with five (5) being rated at high risk. These communities have been identified in attachment 8.

Maps showing Lake County's Wildfire Occurrences from 2003 through 2008 are attached under Appendix C.

Communities at Risk (CAR)

The following tables list communities that have had fires between 1/2004 and 1/2009 and the reason for the fire. The communities listed on the right are designated as medium risk (m) or high risk (h).

Table 1 – Central Lake County Fires by Township/Range 2004-2009

| Township /Range | ESCAPE BURN | ARSON | LIGHTNING | OTHER | TOTAL | COMMUNITIES AT RISK (CARs) |
|-----------------|---------------|---------------|---------------|---------------|------------|----------------------------|
| 18S/24E | 5 | 1 | 0 | 1 | 7 | Lisbon(M) |
| 25E | 3 | 2 | 1 | 3 | 9 | Orange Bend(M) |
| 26E | 5 | 0 | 0 | 2 | 7 | Harbor Shores (M) |
| 19S/24E | 2 | 1 | 0 | 0 | 3 | Okahumpka (M) |
| 25E | 6 | 3 | 1 | 5 | 15 | Yalaha (M) |
| 26E | 1 | 3 | 0 | 1 | 5 | Pumpkin Center (H) |
| 20S/24E | 2 | 1 | 1 | 3 | 7 | Tuscanooga(H) |
| 25E | 3 | 4 | 1 | 2 | 10 | Sloans Ridge (H) |
| 26E | 2 | 0 | 6 | 2 | 10 | South Pines Lake (H) |
| 21S/24E | 5 | 0 | 2 | 2 | 9 | Montverde (M) |
| 25E | 4 | 2 | 2 | 1 | 9 | Bay Lake (H) |
| 26E | 4 | 1 | 1 | 4 | 10 | Orange Mtn (M) |
| 22S/24E | 4 | 1 | 3 | 6 | 14 | South Clermont(M) |
| 25E | 3 | 1 | 2 | 4 | 10 | Mount Plymouth(M) |
| 26E | 6 | 3 | 3 | 4 | 16 | Pittman(M) |
| 23S/24E | 0 | 0 | 0 | 3 | 3 | Sorrento(M) |
| 25E | 5 | 1 | 0 | 0 | 6 | Wekiva (M) |
| 26E | 0 | 0 | 0 | 3 | 3 | |
| 24S/24E | 1 | 11 | 1 | 0 | 13 | |
| 25E | 2 | 2 | 2 | 2 | 8 | |
| 26E | 5 | 1 | 3 | 1 | 10 | |
| TOTAL | 68/37% | 38/21% | 29/15% | 49/27% | 184 | 4 High Risk CARs |

Table 2 – North Eastern Lake County Fires Caused by Township/Range 2004-2009

| Township /Range | ESCAPE BURN | ARSON | LIGHTNING | OTHER | TOTAL | COMMUNITIES AT RISK (CARs) |
|-----------------|---------------|---------------|---------------|---------------|------------|--|
| 15S/27E | 0 | 0 | 0 | 1 | 1 | Astor(M), Astor Park (M), Cassia(H) |
| 16S/27E | 2 | 0 | 0 | 0 | 2 | Camp Ocala (M), Pittman (M) |
| 16S/28E | 0 | | | 0 | 0 | Alexander Springs(M),Blue Lakes Ridge(H) |
| 17S/27E | 4 | 0 | 1 | 1 | 6 | Lake Kathryn (H), Paisley(H), Crows Bluff(M) |
| 17S/28E | 9 | 6 | 8 | 4 | 27 | Ferndale(M), Forrest Hills (H) |
| 17S/29E | 6 | 5 | 7 | 2 | 20 | Fullerville(M), Deer Have, (H) |
| 18S/27E | 5 | 1 | 1 | 0 | 7 | Royal Trails (H), Florida Hills (H) |
| 18S/28E | 0 | 6 | 22 | 1 | 29 | Lake Mack (H),Pine Hills (H) |
| 18S/29E | 7 | 2 | 9 | 6 | 24 | Pine Lakes (H) |
| 19S/27E | 3 | 0 | 2 | 0 | 5 | |
| 19S/28E | 6 | 0 | 1 | 0 | 8 | |
| 19S/29E | 3 | 0 | 10 | 0 | 13 | |
| TOTAL | 46/32% | 21/15% | 61/43% | 15/14% | 142 | 10 High Risk CARs |

Highest occurrences hi-lighted in yellow, both tables

REGIONAL COORDINATION

Lake County closely coordinates with several regional agencies in Central Florida for environmental protection, transportation, growth management, and water supply issues. The primary agencies are the East Central Florida Regional Planning Council; the St. Johns River Water Management District and Southwest Florida Water Management District; and the Lake-Sumter Metropolitan Planning Organization. East Central Florida Regional Planning Council (ECFRPC)

The East Central Florida Regional Planning Council (ECFRPC) is the regional planning agency representing Lake County and other Central Florida counties. The ECFRPC, according to Chapter 163, Part II, Florida Statutes, is permitted to review local government comprehensive plans for compliance with regional policies. The ECFRPC is also directed to establish informal mediation processes to resolve conflicts between local governments regarding growth management and comprehensive planning issues. It is also the Council's responsibility to review Developments of Regional Impact (DRI) and facilitate the statutorily required process that is involved.

The ECFRPC provides data support and works closely with Lake County on growth management issues. There are two Lake County Commissioners that sit on the 31 member Council.

Lake-Sumter Metropolitan Planning Organization (LSMPO)

The Lake-Sumter Metropolitan Planning Organization (LSMPO) provides a forum for cooperative decision making concerning transportation issues throughout the urbanized area of Lake and Sumter counties in Florida. As the lead agency for regional transportation planning, the MPO is responsible for the planning of several modes of transportation.

The LSMPO's regional planning allows for the allocation of millions of dollars in federal transportation funding annually. The LSMPO also helps citizens speak with one voice to their state and federal legislators on transportation-related issues. Most importantly, effective public involvement insures scarce tax dollars are used in accordance with the greatest needs and desires of the community.

The LSMPO seeks to improve transportation in both counties for all modes of travel, including mass transit, walking, bicycling, as well as the automobile. The LSMPO prioritizes capital improvements to address the counties' travel needs and allocates federal funding to implement the projects as identified in the LRTP and the TIP.

Lake County Growth Management and Public Works coordinates with the LSMPO to accomplish the County's transportation goals, share data, and provide staff report.

St. John River Water Management District (SJRWMD)

The St. Johns River Water Management District (SJRWMD) is responsible for managing ground and surface water supplies in all or part of 18 counties in northeast and east-central Florida. The SJRWMD manages most of Lake County except for a small portion in the southwest corner of the County. There are SJRWMD offices in Palatka, Jacksonville, Altamonte Springs, and Palm Bay.

The SJRWMD issues permits for various water use activities and/or activities that have the potential to adversely impact ground or surface water resources and adjacent lands; buys land to

preserve or restore vital wetlands and water resources; conducts research about the quality of ground and surface water resources; maps ground and surface water resources; and conducts outreach and public education programs.

Lake County Growth Management, Environmental Services, Public Land Management, and other departments work closely with the SJRWMD on a regular basis. The SJRWMD also partnered with the Public Land Management Division and other agencies to help purchase the 192-acre Ferndale Preserve.

Southwest Florida Water Management District (SWFWMD)

The Southwest Florida Water Management District (SWFWMD) manages water and related natural resources to ensure their continued availability while maximizing environmental, economic and recreational benefits. The SWFWMD maintains the balance between the water needs of current and future users while protecting and maintaining water and related natural resources which provide the SWFWMD with its existing and future water supply. The duties of the SWFWMD are analogous to those of the SJRWMD.

The SWFWMD manages a portion of the southwest corner of Lake County, which includes a large portion of the Green Swamp. Various Lake County Departments work closely with the SWFWMD.

ADJACENT COUNTIES

Lake County and its seven adjacent counties—Marion, Orange, Osceola, Polk, Seminole, Sumter, and Volusia—through formal and informal processes closely coordinate to address growth management, environmental and public facility issues. This communication allows Lake County to be cognizant of the constant changes in land use and development; transportation; and environmental preservation in the bordering counties.

INTERGOVERNMENTAL COORDINATION EFFECTIVENESS

Intergovernmental coordination effectiveness between Lake County, local governments, and various agencies that play an integral role in the day to day operations of the County varies considerably. In some cases, there are no formal agreements with the County and coordination hinges on informal arrangements that, in many cases, still serve their necessary purpose. However, Lake County does encourage formal agreements and has been successful in negotiating with local governments and agencies. The Joint Planning Agreements (JPA) described in this document, and the willingness of most of the municipalities to engage in discussions with the County to draft JPAs, is an encouraging testament to the desire to create formal mechanisms to stimulate the intergovernmental coordination process.

Coordination between Lake County and other local governments will continue and will expand and improve. Communication between Lake County and adjacent counties is minimal; however, Lake County does receive comments from the adjacent counties regarding developments within Lake County and close to their border and also during the Development of Regional Impact review process.

Lake County and the fourteen municipalities have significantly improved the coordination process. Communication regarding proposed development and annexations is standard and JPA

agreements also assist in the review process. The school concurrency initiative has also given rise to an increase in data sharing and substantive discussions about development in the County and municipalities. Improved communication regarding development within the cities in the Green Swamp Area of Critical State Concern needs to be improved and Lake County will work towards that goal.

Coordination mechanisms with the regional agencies have, for the most part, been effective. Central Florida, as a whole, has experienced an impressive drive to “think regionally”. Joint meetings hosted by the East Central Florida Regional Planning Council (ECFRPC) with representatives of the counties in Central Florida have proven to be informative and also give county representatives an opportunity to forge working relationships that improve communication and coordination. The ECFRPC’s state mandated role in the review of Developments of Regional Impact (DRI), and their voluntary review of comprehensive plans and comprehensive plan amendments, is beneficial to both Lake County and the region as a whole. Moreover, the Lake-Sumter MPO has been effective in creating a greater awareness of transportation issues in Lake County and portions of Sumter County, the fourteen Lake County municipalities, and the City of Wildwood in Sumter County.

Lake County’s coordination with state agencies such as the Department of Community Affairs has been effective. State agencies are, in most cases, involved with Lake County on a project-by-project basis. State agency review of many projects is mandated by State Statute.

Federal coordination is less formal. Many federal programs are implemented through state agencies. Direct communication between Lake County and federal agencies is infrequent and on a project-by-project basis.

DATA TABLES

Table 1 lists the municipalities and special districts within Lake County. Table 2 is a comprehensive list of the proposed and existing Interlocal Agreements with Lake County.

Table 3 – Municipalities and Special Districts

| NAME | TYPE | JURISDICTION OR SPECIAL DISTRICT WITH NO APPLICABLE AGREEMENTS |
|-----------------------------|----------------|--|
| Lake, County of | Jurisdictional | |
| Astatula, Town of | Jurisdictional | |
| Clermont, City of | Jurisdictional | |
| Eustis, City of | Jurisdictional | |
| Fruitland Park, City of | Jurisdictional | |
| Groveland, City of | Jurisdictional | |
| Howey-in-the-Hills, Town of | Jurisdictional | |
| Lady Lake, Town of | Jurisdictional | |
| Leesburg, City of | Jurisdictional | |
| Mascotte, City of | Jurisdictional | |
| Minneola, City of | Jurisdictional | |
| Montverde, Town of | Jurisdictional | |
| Mount Dora, City of | Jurisdictional | |

**Intergovernmental Coordination Element
Data, Inventory & Analysis**

| NAME | TYPE | JURISDICTION OR SPECIAL DISTRICT WITH NO APPLICABLE AGREEMENTS |
|---|----------------|---|
| Tavares, City of | Jurisdictional | |
| Umatilla, City of | Jurisdictional | |
| St. Johns River Water Management District | Jurisdictional | |
| Southwest Florida Water Management District | Jurisdictional | X |
| Central Lake Community Development District | Independent | |
| Community Redevelopment Agency of the City of Umatilla | Dependent | X |
| Country Club of Mount Dora Community Development District | Independent | X |
| Country Greens Community Development District | Independent | |
| Deer Island Community Development District | Independent | X |
| Downtown and East Town Redevelopment Agency | Dependent | X |
| Fruitland Park Community Redevelopment Agency | Dependent | X |
| Greater Leesburg Community Redevelopment Agency | Dependent | X |
| Housing Authority of the City of Eustis | Dependent | X |
| Lake Apopka Natural Gas District | Independent | X |
| Lake County Industrial Development Commission | Dependent | X |
| Lake County Water Authority | Independent | |
| Lake Soil and Water Conservation District | Independent | X |
| Mount Dora Community Redevelopment Agency | Dependent | X |
| Mount Dora Health Facilities Authority | Dependent | X |
| North Lake County Hospital District | Independent | X |
| Northeast Community Redevelopment Agency | Dependent | X |
| South Lake County Hospital District | Independent | X |
| Southlake Community Development District | Independent | X |
| Tavares Greater Downtown TIF District | Dependent | X |
| Village Center Community Development District | Independent | |

Intergovernmental Coordination Element
Data, Inventory & Analysis

Table 4 – Existing and Proposed Interlocal Agreements within Lake County

| REPORTING ENTITY | AGREEMENT NUMBER | FUNCTIONAL CATEGORY | PARTIES TO AGREEMENT | EFFECTIVE DATE | EXPIRATION DATE | DESCRIPTION |
|--------------------|------------------|---------------------|--|----------------|-----------------|--|
| Clermont, City of | DR-01 | Drainage | Clermont, Lake County Water Authority | 05/13/2003 | Upon Notice | Crystal Lake stormwater |
| Groveland, City of | DR-04 | Drainage | Groveland, St. Johns River Water Management District | 09/18/2000 | Upon Notice | Interlocal agreement regarding stormwater management cost-sharing program |
| Lake, County of | DR-05 | Drainage | Lake County, Florida Department of Transportation | 03/21/1995 | Upon Notice | Study/preliminary design for drainage improvements |
| Lake, County of | DR-06 | Drainage | Lake County, Polk County | 12/12/2001 | Upon Notice | Settlement agreement regarding construction of weir structure and additional culverts on Lake Lowery. Also addressed: Lake level limitations, permit restrictions, flow improvements to North, future interlocal agreements, future watershed evaluations. |
| Lake, County of | DR-07 | Drainage | Lake County, Lake County Water Authority, Polk County | 12/19/2001 | N/A | Settlement agreement by and between Lake County, Lake County Water Authority and Polk County regarding drainage structures constructed by Polk County in or around Lake Lowery |
| Clermont, City of | ED-01 | Education | Clermont, Lake County School Board | 08/10/1998 | None Provided | School Board Agreement relating to lease to the city of a portion of elementary school site |
| Lake, County of | ED-03 | Education | Lake County, Lake County School Board | 03/21/1994 | Upon Notice | Revocable License to use C.V. Griffin, Sr. Educational Center's stable facility and surrounding pasture in Howey-in-the-Hills for 4-H related programs |
| Lake, County of | ED-04 | Education | Lake County, Orange County, Seminole County, Sumter County | 03/01/1996 | Upon Notice | Central Florida Training Consortium |
| Lake, County of | ED-05 | Education | School Board of Lake County, Lake County, Astatula, Clermont, Eustis, Fruitland Park, Groveland, Howey-in-the-Hills, Lady Lake, Leesburg, Mascotte, Minneola, Montverde, Mount Dora, Tavares, Umatilla | 12/08/2003 | None | Interlocal agreement for public school facility planning |

| REPORTING ENTITY | AGREEMENT NUMBER | FUNCTIONAL CATEGORY | PARTIES TO AGREEMENT | EFFECTIVE DATE | EXPIRATION DATE | DESCRIPTION |
|--------------------|------------------|----------------------|---|--------------------|-----------------|--|
| Tavares, City of | ED-06 | Education | Tavares, School Board of Lake County | 02/08/2002 | N/A | Portable classroom donation for school improvements |
| Clermont, City of | PR-01 | Parks and Recreation | Clermont, Lake County | 07/28/1998 | None Provided | Contribution of boating improvement funds |
| Reporting Entity | Agreement Number | Functional Category | Parties to Agreement | Effective Date | Expiration Date | Description |
| Clermont, City of | PR-02 | Parks and Recreation | Clermont, Lake County | 11/10/1998 | None Provided | Agreement relating to contribution of sales tax funds for community recreation projects |
| Clermont, City of | PR-03 | Parks and Recreation | Clermont, Lake County | 01/05/1999 | None Provided | Agreement relating to contribution of infrastructure sales tax funds for community recreation |
| Lady Lake, Town of | PR-04 | Parks and Recreation | Lady Lake, Oklawaha Basin Recreation & Water Conservation and Control Authority | 05/11/1993 | 30-Day Notice | Oklawaha Basin Recreation & Water Conservation and Control Authority |
| Lake, County of | PR-05 | Parks and Recreation | Lake County, Florida Fish & Wildlife | 02/19/1962 | Upon Notice | Improvements to Astor/Butler boat ramp |
| Lake, County of | PR-06 | Parks and Recreation | Lake County, Eustis | 08/06/1991 | Upon Notice | Annexation of Marsh Park |
| Lake, County of | PR-08 | Parks and Recreation | Lake County, Lady Lake | 02/21/1989 | 02/21/2039 | Lease property located at CR 466 and Landfill Road |
| Lake, County of | PR-11 | Parks and Recreation | Lake County, State of Florida Board of Trustees/Internal Improvement Trust Fund | 03/20/2000 | 03/28/2051 | Lease agreement - Palatlahaha Environmental & Agricultural Reserve - administrative fee |
| Lake, County of | PR-12 | Parks and Recreation | Lake County, Leesburg | 11/07/2003 | 09/30/2005 | Relating to contribution of resort tax funds for construction of enhancements at the Sleepy Hollow Sports Stadium |
| Lake, County of | PR-13 | Parks and Recreation | Lake County, Minneola | Proposed Agreement | | Trailhead Park - four sets of bleachers and a six-foot fence for practice fields. Currently being reviewed for signature by Mayor. |

Intergovernmental Coordination Element
Data, Inventory & Analysis

| REPORTING ENTITY | AGREEMENT NUMBER | FUNCTIONAL CATEGORY | PARTIES TO AGREEMENT | EFFECTIVE DATE | EXPIRATION DATE | DESCRIPTION |
|---------------------|------------------|----------------------|---------------------------------------|--------------------|-----------------|---|
| Mount Dora, City of | PR-15 | Parks and Recreation | Mount Dora, Lake County | Proposed Agreement | | Contribution of infrastructure sales tax funds for community recreation projects |
| Tavares, City of | PR-16 | Parks and Recreation | Tavares, Lake County | 06/12/1990 | Upon Notice | Summerall Park stormwater management |
| Tavares, City of | PR-17 | Parks and Recreation | Tavares, Lake County Water Authority | 06/19/1998 | Upon Notice | Lake Dora Recreational Park management plan |
| Tavares, City of | PR-18 | Parks and Recreation | Tavares, Lake County | 01/05/2000 | Upon Notice | Boating improvement funds for boating-related facilities (original contract and first amendment) |
| Tavares, City of | PR-19 | Parks and Recreation | Tavares, State of Florida | 02/27/2001 | Upon Notice | Submerged land lease - nature park dock |
| Reporting Entity | Agreement Number | Functional Category | Parties to Agreement | Effective Date | Expiration Date | Description |
| Tavares, City of | PR-20 | Parks and Recreation | Tavares, State of Florida | 02/08/2002 | Upon Notice | Submerged lands lease agreement/modification to reduce square footage |
| Umatilla, City of | PR-21 | Parks and Recreation | Umatilla, School Board of Lake County | 05/05/1954 | 05/05/2053 | School Board lease to City of land bounded by Smith Street, Trowell Ave., and Orange Lane for use as a recreation facility; City to maintain facility |
| Umatilla, City of | PR-22 | Parks and Recreation | Umatilla, School Board of Lake County | 12/17/1975 | Upon Notice | Improvement to tennis courts at Umatilla High School. City to provide \$3,000 to light courts and pay electricity costs; School Board to furnish labor to install lighting and allow use of courts by community during non-school hours. Reevaluation at expiration date. |
| Umatilla, City of | PR-23 | Parks and Recreation | School Board of Lake County, Umatilla | 02/25/2002 | 02/25/2022 | City pledged County "Infrastructure Sales Tax Funds for Community Recreational Projects" funds of \$30,000 to construct tennis courts at Umatilla Middle School and pay electricity for lighting. School Board will construct fence and allow use of courts by community during non-school hours. |

| REPORTING ENTITY | AGREEMENT NUMBER | FUNCTIONAL CATEGORY | PARTIES TO AGREEMENT | EFFECTIVE DATE | EXPIRATION DATE | DESCRIPTION |
|--------------------|------------------|---------------------|--|----------------|---|--|
| Astatula, Town of | PS-01 | Public Safety | Astatula, Florida Department of Community Affairs | 07/19/2001 | Upon Notice | Mutual aid |
| Eustis, City of | PS-03 | Public Safety | Eustis, Lake County | 03/01/1989 | Upon Notice | Comprehensive emergency management plan |
| Eustis, City of | PS-04 | Public Safety | Eustis, Florida Department of Community Affairs | 08/01/2001 | Yearly Renewal | Statewide mutual aid |
| Eustis, City of | PS-07 | Public Safety | Eustis, Lake-Sumter EMS | 01/13/2003 | None | Agreement for fire department dispatch services - \$10 per dispatched incident, not to exceed \$1,000 per calendar month |
| Lady Lake, Town of | PS-09 | Public Safety | Lady Lake, Florida Department of Community Affairs | 04/19/1993 | Upon Notice | DCA disaster relief funding agreement |
| Lady Lake, Town of | PS-10 | Public Safety | Lady Lake, State of Florida | 04/27/1994 | Annually Renewed | Statewide mutual aid agreement |
| Lady Lake, Town of | PS-11 | Public Safety | Lady Lake, The Villages of Lake Sumter | 08/05/1994 | 08/05/2024 | Agreement between Town of Lady Lake and Villages of Lake Sumter for additional fire protection |
| Lady Lake, Town of | PS-12 | Public Safety | Lady Lake, State of Florida | 05/01/1995 | Annually Renewed | Modification #1 to statewide mutual aid agreement |
| Lady Lake, Town of | PS-13 | Public Safety | Lady Lake, Florida Department of Law Enforcement | 01/11/2001 | Change of agency head determines the need for a new agreement | Criminal justice user agreement - Florida Department of Law Enforcement and Lady Lake Police Department |
| Lady Lake, Town of | PS-14 | Public Safety | Lady Lake, Village Center Community Development District | 10/01/2003 | 09/30/2010 | Interlocal governmental agreement for protection between Lady Lake and VCCDD |

**Intergovernmental Coordination Element
Data, Inventory & Analysis**

| REPORTING ENTITY | AGREEMENT NUMBER | FUNCTIONAL CATEGORY | PARTIES TO AGREEMENT | EFFECTIVE DATE | EXPIRATION DATE | DESCRIPTION |
|-------------------------|-------------------------|----------------------------|--|-----------------------|------------------------|--|
| Lake, County of | PS-15 | Public Safety | Florida Department of Highway Safety and Motor Vehicles | 11/01/1973 | 10/31/2013 | Lease for the Tavares driver's license examining office and driver's course. |
| Lake, County of | PS-16 | Public Safety | Lake County, Florida Department of Agriculture and Consumer Services | 10/10/1980 | Upon Notice | Forestry radio equipment for fire departments |
| Lake, County of | PS-17 | Public Safety | Lake County, Lake County School Board | 03/23/1981 | 10/14/2010 | For Altoona Volunteer Fire Department |
| Lake, County of | PS-18 | Public Safety | Lake County, Florida Highway Patrol | 09/18/1984 | Upon Notice | Use of Lake County radar guns |
| Lake, County of | PS-19 | Public Safety | Lake County, Lady Lake | 10/01/1984 | 09/30/2083 | Lease for fire station 61 |
| Lake, County of | PS-20 | Public Safety | Lake County, Groveland | 10/07/1985 | Upon Notice | Mutual aid for fire services |
| Lake, County of | PS-21 | Public Safety | Lake County, Clermont | 10/15/1985 | Upon Notice | Mutual aid agreement for fire services |
| Lake, County of | PS-22 | Public Safety | Lake County, Mount Dora | 10/15/1985 | Upon Notice | For fire departments |
| Lake, County of | PS-23 | Public Safety | Lake County, Astatula | 01/13/1987 | Upon Notice | Lease of property for fire station |
| Lake, County of | PS-24 | Public Safety | Lake County, Florida Department of Agriculture and Consumer Services | 01/20/1987 | Upon Notice | Leased equipment for countywide fire services |
| Lake, County of | PS-25 | Public Safety | Lake County, Marion County | 09/07/1987 | Upon Notice | Mutual aid agreement for fire department |
| Lake, County of | PS-26 | Public Safety | Lake County, Fire Department of Oxford, FL | 09/08/1987 | Upon Notice | Mutual aid agreement for fire department services |
| Lake, County of | PS-27 | Public Safety | Lake County, City of Wildwood | 10/20/1987 | Upon Notice | Mutual aid agreement for fire department |

| REPORTING ENTITY | AGREEMENT NUMBER | FUNCTIONAL CATEGORY | PARTIES TO AGREEMENT | EFFECTIVE DATE | EXPIRATION DATE | DESCRIPTION |
|------------------|------------------|---------------------|--|----------------|-----------------|---|
| Lake, County of | PS-28 | Public Safety | Lake County, Florida Department of Agriculture and Consumer Services | 11/12/1987 | Upon Notice | Memorandum of understanding for fire protection |
| Lake, County of | PS-29 | Public Safety | Lake County, Orange County | 12/21/1987 | Upon Notice | Interlocal agreement for fire protection |
| Lake, County of | PS-30 | Public Safety | Lake County, Seminole County | 01/12/1988 | Upon Notice | Interlocal agreement for fire protection |
| Lake, County of | PS-31 | Public Safety | Lake County, Lake County Sheriff's Office | 02/26/1988 | Upon Notice | Fire protection - Cassia |
| Lake, County of | PS-32 | Public Safety | Lake County, Mascotte | 05/09/1988 | Upon Notice | For Emergency 911 service |
| Lake, County of | PS-33 | Public Safety | Lake County, Minneola | 05/10/1988 | Upon Notice | For Emergency 911 service |
| Lake, County of | PS-34 | Public Safety | Lake County, Clermont | 05/24/1988 | Upon Notice | For Emergency 911 service |
| Lake, County of | PS-35 | Public Safety | Lake County, Montverde | 06/07/1988 | Upon Notice | For Emergency 911 service |
| Lake, County of | PS-36 | Public Safety | Lake County, Florida Department of Agriculture and Consumer Services | 07/01/1988 | None | Cooperative agreement to provide fire protection services to forest and wild land acreage |
| Lake, County of | PS-37 | Public Safety | Lake County, Howey-in-the-Hills | 07/06/1988 | Upon Notice | For Emergency 911 service |
| Lake, County of | PS-38 | Public Safety | Lake County, U.S. Navy NAS - Cecil Field | 11/01/1988 | Upon Notice | Fire fighting assistance |
| Lake, County of | PS-39 | Public Safety | Lake County, Lake County School Board | 07/23/1991 | Upon Notice | For emergency use of school buses |
| Lake, County of | PS-40 | Public Safety | Lake County, Minneola | 04/14/1992 | Upon Notice | 809 South Galena building to be used as a fire station. A new interlocal is currently being negotiated. |

Intergovernmental Coordination Element
Data, Inventory & Analysis

| REPORTING ENTITY | AGREEMENT NUMBER | FUNCTIONAL CATEGORY | PARTIES TO AGREEMENT | EFFECTIVE DATE | EXPIRATION DATE | DESCRIPTION |
|------------------|------------------|---------------------|---|----------------|-----------------|--|
| Lake, County of | PS-41 | Public Safety | Lake County, Leesburg, Florida Regional Emergency Medical Services, Inc., Lake-Sumter Mental Health, Inc. | 08/24/1992 | Upon Notice | Radio tower agreement. County-owned tower located at Leesburg Police Dept., 115 E Magnolia St. |
| Lake, County of | PS-42 | Public Safety | Lake County, Lake County Property Appraiser | 12/08/1992 | Upon Notice | Non-ad valorem assessment - fire rescue |
| Lake, County of | PS-43 | Public Safety | Lake County, Astatula | 12/27/1993 | Upon Notice | Lease for fire station 71 - 25028 Kirkwood Ave., Astatula |
| Lake, County of | PS-44 | Public Safety | Lake County, Florida Division of Emergency Management | 04/27/1994 | Upon Notice | Catastrophic disaster response and recovery |
| Lake, County of | PS-45 | Public Safety | Lake County, City of Orlando | 05/17/1994 | Upon Notice | Interlocal agreement relating to emergency services |
| Lake, County of | PS-46 | Public Safety | Lake County, Sumter County | 05/31/1994 | Upon Notice | Enhanced 911 adjacent jurisdiction |
| Lake, County of | PS-47 | Public Safety | Lake County, Montverde | 06/07/1994 | Upon Notice | Agreement to maintain fire department, equipment, and firefighters |
| Lake, County of | PS-48 | Public Safety | Lake County, Lake County School Board | 08/16/1994 | Upon Notice | Fire and rescue services to schools |
| Lake, County of | PS-49 | Public Safety | Lake County, Howey-in-the-Hills | 09/12/1994 | Upon Notice | Statewide mutual aid agreement |
| Lake, County of | PS-50 | Public Safety | Lake County, Osceola County Board of County Commissioners | 10/18/1994 | Upon Notice | Interlocal agreement for emergency management |
| Lake, County of | PS-51 | Public Safety | Lake County, Astor Volunteer Fire Department, Inc. | 03/14/1996 | Upon Notice | Lease of truck bay area at Astor Fire Station, 55936 Blue Creek Rd., Astor, FL 32102 |
| Lake, County of | PS-52 | Public Safety | Lake County, Leesburg | 08/06/1996 | Upon Notice | Interlocal agreement relating to the provision of first response medical services |

| REPORTING ENTITY | AGREEMENT NUMBER | FUNCTIONAL CATEGORY | PARTIES TO AGREEMENT | EFFECTIVE DATE | EXPIRATION DATE | DESCRIPTION |
|------------------|------------------|---------------------|---|----------------|-----------------|---|
| Lake, County of | PS-53 | Public Safety | Naval Air Station - Cecil Field - Astor | 08/20/1996 | Upon Notice | Mutual aid in event of emergency |
| Lake, County of | PS-54 | Public Safety | Lake County, Lady Lake | 10/02/1996 | Upon Notice | Interlocal relating to provision of fire prevention services. Plan reviews, inspections, water flow calculations, safety surveys of existing businesses, and copies of related reports. |
| Lake, County of | PS-55 | Public Safety | Lake County, Lady Lake | 10/02/1996 | Upon Notice | Provision of fire prevention services to the town of Lady Lake. Revenue according to schedule included in agreement. |
| Lake, County of | PS-56 | Public Safety | Lake County, Osceola County, Orange County, Polk County | 01/06/1997 | Upon Notice | Mutual fire and disaster aid agreement |
| Lake, County of | PS-57 | Public Safety | Lake County, Orange County, Osceola County, Polk County | 01/27/1997 | Upon Notice | Interlocal mutual fire and disaster aid agreement |
| Lake, County of | PS-59 | Public Safety | Lake County, Astor Volunteer Fire Department, Inc. | 07/10/1997 | Upon Notice | Memorandum of understanding for maintenance and upkeep of buildings and grounds located at 55936 Blue Creek Rd. Provide standby services for immediate response to emergencies between hours of 8 am and 5 pm Monday-Friday. Monthly invoice to County: \$35/day. |
| Lake, County of | PS-61 | Public Safety | Lake County, Lady Lake | 07/22/1998 | Upon Notice | Interlocal agreement pertaining to petroleum storage tank plan review services |
| Lake, County of | PS-62 | Public Safety | Lake County, Mascotte | 01/25/1999 | Upon Notice | Interlocal agreement pertaining to petroleum storage tank plan review services |
| Lake, County of | PS-63 | Public Safety | Lake County, Florida Division of Forestry | 04/01/1999 | Upon Notice | Operating plan to address the type and extent of cooperation between Lake County Fire Rescue and the Florida Division of Forestry. |
| Lake, County of | PS-64 | Public Safety | Lake County, Leesburg | 09/27/1999 | Upon Notice | Interlocal regarding provision of fire and emergency medical assistance |

Intergovernmental Coordination Element
Data, Inventory & Analysis

| REPORTING ENTITY | AGREEMENT NUMBER | FUNCTIONAL CATEGORY | PARTIES TO AGREEMENT | EFFECTIVE DATE | EXPIRATION DATE | DESCRIPTION |
|------------------|------------------|---------------------|--|----------------|-----------------|---|
| Lake, County of | PS-65 | Public Safety | Lake County, Lake County Sheriff's Office | 11/03/1999 | none | Salary and related personnel costs of one full-time environmental crimes deputy |
| Lake, County of | PS-66 | Public Safety | Lake County, Minneola | 12/07/1999 | Upon Notice | Interlocal for animal control services |
| Lake, County of | PS-69 | Public Safety | Lake County, Montverde | 05/18/2000 | None | Interlocal for provision of emergency services |
| Lake, County of | PS-70 | Public Safety | Lake County, Sumter County | 07/20/2000 | Upon Notice | Interlocal agreement relating to the provision of emergency medical services. FY00-01: Lake 81%, Sumter 19%. Then prorated based on number of previous year's transports. |
| Lake, County of | PS-71 | Public Safety | Lake County, Lady Lake | 05/02/2001 | Upon Notice | Interlocal agreement relating to provision of fire prevention services through Growth Management plan reviews, inspections, and water flow calculations |
| Lake, County of | PS-72 | Public Safety | Lake County, Lake County Tax Collector | 06/07/2001 | Upon Notice | Agreement for non-ad valorem assessment services for fire services and solid waste collection & disposal. Pay for the administrative services provided and actual costs of collection, not to exceed 2% of the amount of special assessments collected & remitted |
| Lake, County of | PS-73 | Public Safety | Lake County, Lake-Sumter EMS | 06/19/2001 | Upon Notice | Agreement relating to advanced life support services. Automatically renews annually. |
| Lake, County of | PS-74 | Public Safety | Lake County, Lake-Sumter EMS | 06/25/2001 | Upon Notice | Permits Lake County Fire Rescue to provide advanced life support services non-transport utilizing LSEMS Certificate of Public Convenience & Necessity under the direction of the LSEMS Medical Director |
| Lake, County of | PS-75 | Public Safety | Lake County, Eustis | 10/17/2001 | Upon Notice | Mutual aid - fire and rescue services |
| Lake, County of | PS-76 | Public Safety | Lake County, Sunlake Volunteer Fire Department | 10/22/2001 | Upon Notice | Interlocal agreement regarding the placement and operation of automatic external defibrillator. |

| REPORTING ENTITY | AGREEMENT NUMBER | FUNCTIONAL CATEGORY | PARTIES TO AGREEMENT | EFFECTIVE DATE | EXPIRATION DATE | DESCRIPTION |
|------------------|------------------|---------------------|--|----------------|------------------------------------|---|
| Lake, County of | PS-78 | Public Safety | Lake County, Howey-in-the-Hills | 04/23/2002 | Upon Notice | Agreement relating to the collection of impact fees and interim fire/rescue assessment fees. Terminates interlocal agreement dated 3/21/85 and 1st amendment dated 10/5/91. |
| Lake, County of | PS-79 | Public Safety | Lake County, Florida Department of Community Affairs | 06/25/2002 | Upon Notice | Statewide mutual aid agreement. Supercedes 1994 agreement (M-4). |
| Lake, County of | PS-80 | Public Safety | Lake County, Sumter County Fire/Rescue | 10/14/2002 | Upon Notice | Memorandum of understanding - emergency medical first response |
| Lake, County of | PS-81 | Public Safety | Lake County, Sumter County Fire/Rescue | 10/15/2002 | Upon Notice | Memorandum of understanding - extrication/rescue. \$200/response where extrication services provided. |
| Lake, County of | PS-82 | Public Safety | Lake County, Volusia County | 10/15/2002 | Automatic yearly renewal | Automatic response and assistance with structure fires, medical emergencies, and brush fires, in accordance with protocol, within service areas described on the map |
| Lake, County of | PS-83 | Public Safety | Lake County, Montverde | 10/24/2002 | Upon Notice | Placement and operation of automatic external defibrillator (AED) |
| Lake, County of | PS-85 | Public Safety | Lake County, Mount Dora | 11/12/2002 | Upon Notice | Interlocal agreement relating to reciprocal first response fire and rescue |
| Lake, County of | PS-86 | Public Safety | Lake County, Lake-Sumter EMS | 11/19/2002 | Upon Notice | Agreement relating to Station 65 at Pennbrooke. Lake-Sumter EMS to pay 75% of utilities. |
| Lake, County of | PS-87 | Public Safety | Lake County, Southlake Utilities, Inc. | 11/19/2002 | Upon Completion | Service agreement #2109 for Summer Bay Fire Station #94. County to construct the extension to the station. Payment involves contributions for equivalent residential connections and plan review & inspection fees. |
| Lake, County of | PS-88 | Public Safety | Lake County, Lake County Sheriff's Office, Clermont | 12/01/2002 | Renewable for three one-year terms | Lease agreement for sheriff substation at 882 DeSoto St., Clermont. Renewable for three one-year terms. |
| Lake, County of | PS-89 | Public Safety | Lake County, Eustis | 03/24/2003 | Upon Notice | Interlocal agreement for the provision of security at the Lake County Fairgrounds. \$25/hr for off-duty police officers. |
| Lake, County of | PS-90 | Public Safety | Lake County, Mascotte | 04/14/2003 | automatic renewal | Interlocal agreement pertaining to first responder services |
| Lake, County of | PS-92 | Public Safety | Lake County, Lady Lake, Village Center Community Development | 05/27/2003 | 09/30/2010 | Reciprocal agreement to respond to fires and emergencies |

**Intergovernmental Coordination Element
Data, Inventory & Analysis**

| REPORTING ENTITY | AGREEMENT NUMBER | FUNCTIONAL CATEGORY | PARTIES TO AGREEMENT | EFFECTIVE DATE | EXPIRATION DATE | DESCRIPTION |
|-------------------------|-------------------------|----------------------------|--|-----------------------|------------------------|---|
| | | | District | | | |
| Lake, County of | PS-93 | Public Safety | Lake County, Astatula | 07/07/2003 | Upon Notice | Emergency 911 service |
| Leesburg, City of | PS-95 | Public Safety | Lake County, Leesburg | 07/11/1988 | Upon Notice | Participation in the E-911 telephone system plan |
| Mount Dora, City of | PS-98 | Public Safety | Mount Dora, Lake-Sumter EMS | 11/20/2001 | Upon Notice | Memorandum of understanding relating to extrication and rescue |
| Mount Dora, City of | PS-99 | Public Safety | Mount Dora, Lake-Sumter EMS | 08/15/2002 | Upon Notice | Provide advanced life support services to persons within the City of Mount Dora |
| Tavares, City of | PS-101 | Public Safety | Tavares, Lake County | 06/15/1988 | Upon Notice | 911 agreement |
| Tavares, City of | PS-102 | Public Safety | Tavares, Lake County Sheriff's Office | 12/13/1989 | Upon Notice | Operational assistance agreement |
| Tavares, City of | PS-103 | Public Safety | Tavares, Lake County | 12/07/1999 | Upon Notice | Interlocal agreement for animal control services |
| Tavares, City of | PS-104 | Public Safety | Tavares, Orange County | 06/28/2000 | Upon Notice | Health Facilities Authority interlocal agreement |
| Tavares, City of | PS-105 | Public Safety | Tavares, Florida Department of Community Affairs | 12/06/2000 | Upon Notice | Statewide mutual aid agreement - emergency disaster services |
| Tavares, City of | PS-106 | Public Safety | Tavares, Lake County Sheriff's Office | 03/01/2001 | N/A | Lake County Sheriff - live fire house |
| Tavares, City of | PS-108 | Public Safety | Tavares, Lake County Sheriff's Office | 08/22/2001 | None | Mobile data terminal link to FCIC/NCIC |
| Tavares, City of | PS-110 | Public Safety | Tavares, Lake-Sumter EMS | 11/13/2001 | Upon Notice | Interlocal agreement for extrication/rescue |
| Tavares, City of | PS-112 | Public Safety | Tavares, Lake-Sumter EMS | 08/07/2003 | Upon Notice | Fire department dispatch services and housing 2003-2004. Two contracts - ongoing - with 90 days written notice required |

| REPORTING ENTITY | AGREEMENT NUMBER | FUNCTIONAL CATEGORY | PARTIES TO AGREEMENT | EFFECTIVE DATE | EXPIRATION DATE | DESCRIPTION |
|---------------------|------------------|---------------------|---|----------------|-----------------------------------|---|
| Umatilla, City of | PS-114 | Public Safety | Umatilla, School Board of Lake County | 07/17/1985 | None | Fire and police protection for Umatilla Elementary, Middle School & High School |
| Umatilla, City of | PS-115 | Public Safety | Lake County Sheriff's Office, Umatilla | 05/17/1988 | None | 911 Communication plan to be run by the Lake County Sheriff's Office |
| Umatilla, City of | PS-116 | Public Safety | Eustis, Umatilla | 05/21/1991 | None | Fire protection services within the Eustis/Umatilla fire service areas |
| Umatilla, City of | PS-117 | Public Safety | State of Florida, Umatilla | 07/31/2000 | None | Disaster aid - emergency management |
| Umatilla, City of | PS-118 | Public Safety | Lake County, Umatilla | 05/07/2002 | Upon termination by either party | Parties will assist one another in responding to structure fires, brush fires and fire alarms as well as medical emergencies and rescue scenarios. |
| Eustis, City of | PW-01 | Potable Water | Eustis, Country Greens Community Development District | 03/12/2002 | N/A | Provision of water, wastewater, and reclaimed water services |
| Lake, County of | PW-02 | Potable Water | Lake County, Groveland | 01/04/2000 | Upon Notice | Interlocal agreement for the provision of water and wastewater transmission along Sampey Rd. |
| Lake, County of | PW-03 | Potable Water | Central Lake Community Development District | 05/10/2001 | None | Interlocal agreement to allow District to authorize Central Lake Utilities to provide water and sewer to Mission Inn Resort and its development |
| Lake, County of | PW-04 | Potable Water | Lake County, Lake County School Board | 09/17/2002 | Upon Notice | Use and right of entry onto property owned by School Board located along south side of Frankies Rd. to fulfill a monitoring requirement imposed by the Department of Environmental Protection for monitor wells |
| Mount Dora, City of | PW-05 | Potable Water | Mount Dora, Orange County | 11/12/1996 | 01/01/2047 | Water and wastewater service territorial agreement |
| Umatilla, City of | PW-06 | Potable Water | Umatilla, Eustis | 04/16/2003 | Until termination by either party | Eustis and Umatilla agree to establish their planning service areas and annex only within said areas |

Intergovernmental Coordination Element
Data, Inventory & Analysis

| REPORTING ENTITY | AGREEMENT NUMBER | FUNCTIONAL CATEGORY | PARTIES TO AGREEMENT | EFFECTIVE DATE | EXPIRATION DATE | DESCRIPTION |
|---------------------|------------------|---------------------|--|--------------------|-------------------|---|
| Clermont, City of | SS-01 | Sanitary Sewer | Clermont, City of Apopka | 03/25/2003 | None Provided | City of Apopka piggyback - residuals, hauling, treatment, and disposal - WWTP |
| Clermont, City of | SS-02 | Sanitary Sewer | Clermont, Shelley's Environmental | 03/25/2003 | None Provided | Shelley's Environmental piggyback contract - East WWTP - Contract #2001-01 |
| Eustis, City of | SS-03 | Sanitary Sewer | Eustis, Country Greens Community Development District | 03/12/2002 | N/A | Provision of water, wastewater, and reclaimed water services |
| Lady Lake, Town of | SS-05 | Sanitary Sewer | Lady Lake, Village Center Community Development District | 11/18/2002 | Upon Notice | Wastewater treatment plant capacity and bulk treatment agreement between Lady Lake and VCCDD |
| Lake, County of | SS-06 | Sanitary Sewer | Lake County, City of Orlando | 02/01/1983 | Upon Notice | Reclaimed irrigation water lines |
| Lake, County of | SS-07 | Sanitary Sewer | Lake County, Orange County, City of Orlando | 08/04/1987 | None | Water Conserv II Project. Original contract dated 8/4/87 - M-254 - no fees & no expiration. CUPs: 86/9/4-3, 86/9/6-3, 86/9/7-3 and 86/9/8-3. |
| Lake, County of | SS-08 | Sanitary Sewer | Lake County, Groveland | 01/04/2000 | Upon Notice | Interlocal agreement for the provision of water and wastewater transmission along Sampey Rd. |
| Lake, County of | SS-09 | Sanitary Sewer | Central Lake Community Development District | 05/10/2001 | None | Interlocal agreement to allow District to authorize Central Lake Utilities to provide water and sewer to Mission Inn Resort and its development |
| Lake, County of | SS-10 | Sanitary Sewer | Lake County, Astor/Astor Park Water Association, Inc. | 06/19/2001 | None | Sewer installation agreement |
| Lake, County of | SS-11 | Sanitary Sewer | Lake County, Florida Water Services Corp. | 04/01/2003 | Upon Notice | Bill of sale - Lake County Welcome Center sanitary sewer. |
| Lake, County of | SS-12 | Sanitary Sewer | Central Lake Community Development District | Proposed Agreement | | Proposed agreement to provide sanitary sewer service to Howey-in-the-Hills (not yet drafted) |
| Leesburg, City of | SS-13 | Sanitary Sewer | Leesburg, Fruitland Park | 03/27/1995 | Upon Notice | Interlocal agreement relating to the provision of wastewater treatment and disposal service to portions of Fruitland Park |
| Mount Dora, City of | SS-14 | Sanitary Sewer | Mount Dora, Orange County | 11/12/1996 | 01/01/2047 | Water and wastewater service territorial agreement |
| Umatilla, City of | SS-15 | Sanitary Sewer | Umatilla, Eustis | 04/16/2003 | Until termination | Eustis and Umatilla agree to establish their planning service areas and annex only within said areas |

| REPORTING ENTITY | AGREEMENT NUMBER | FUNCTIONAL CATEGORY | PARTIES TO AGREEMENT | EFFECTIVE DATE | EXPIRATION DATE | DESCRIPTION |
|-------------------|------------------|---------------------|---|----------------|-----------------|--|
| | | | | | by either party | |
| Clermont, City of | SW-01 | Solid Waste | Clermont, Mascotte | 02/25/1999 | None Provided | Disposal of yard trash for composting |
| Clermont, City of | SW-02 | Solid Waste | Clermont, Republic Services | 01/28/2003 | None Provided | Collection franchise to Republic Services |
| Lake, County of | SW-03 | Solid Waste | Lake County, Leesburg | 10/24/1988 | 07/01/2014 | Interlocal agreement for solid waste disposal service |
| Lake, County of | SW-04 | Solid Waste | Lake County, Eustis | 10/31/1988 | 07/01/2014 | Solid waste disposal service |
| Lake, County of | SW-05 | Solid Waste | Lake County, Mount Dora | 11/01/1988 | 07/01/2014 | Solid waste disposal services |
| Lake, County of | SW-06 | Solid Waste | Florida Department of Environmental Protection | 11/15/1988 | Upon Notice | Interlocal agreement regarding the Astatula landfill |
| Lake, County of | SW-07 | Solid Waste | Lake County, Lake County Property Appraiser | 01/20/1989 | Upon Notice | Non-ad valorem assessment - solid waste collection |
| Lake, County of | SW-08 | Solid Waste | Lake County, Leesburg | 10/22/1991 | Upon Notice | Solid waste disposal. Disposal fee to exclude any liability or cost associated with the closure, management, monitoring, cleanup, etc associated with the County owned or operated landfills, known as Lady Lake, Umatilla, Log House, and Astatula. |
| Lake, County of | SW-09 | Solid Waste | Lake County, Florida Department of Environmental Protection | 04/04/1994 | Upon Notice | Consent order on landfill ash mono-fill |
| Lake, County of | SW-10 | Solid Waste | Lake County, Leesburg | 09/20/1994 | Upon Notice | Letter of agreement relating to the establishment and monitoring of franchise agreements related to commercial recycling |
| Lake, County of | SW-11 | Solid Waste | Lake County, Groveland | 09/23/1994 | Upon Notice | Letter of agreement relating to the establishment and monitoring of franchise agreements related to commercial recycling |
| Lake, County of | SW-12 | Solid Waste | Lake County, Howey-in-the-Hills | 01/20/1998 | Upon Notice | Payment and applications of solid waste system fees |
| Lake, County of | SW-13 | Solid Waste | Lake County, Leesburg | 10/01/1999 | Upon Notice | Interlocal agreement relating to recycling revenue sharing. |

**Intergovernmental Coordination Element
Data, Inventory & Analysis**

| REPORTING ENTITY | AGREEMENT NUMBER | FUNCTIONAL CATEGORY | PARTIES TO AGREEMENT | EFFECTIVE DATE | EXPIRATION DATE | DESCRIPTION |
|-------------------------|-------------------------|----------------------------|--|-----------------------|---|---|
| Lake, County of | SW-14 | Solid Waste | Lake County, Lake County Tax Collector | 06/07/2001 | Upon Notice | Agreement for non-ad valorem assessment services for fire services and solid waste collection & disposal. Pay for the administrative services provided and actual costs of collection, not to exceed 2% of the amount of special assessments collected & remitted |
| Lake, County of | SW-15 | Solid Waste | Lake County, Florida Recycling Services, Inc. | 01/23/2002 | Upon Notice | Solid waste service agreement #1 3738 - Paisley Library |
| Lake, County of | SW-16 | Solid Waste | Lake County, Florida Recycling Services, Inc. | 07/09/2002 | Upon Notice | Trash collection - Astor County Library |
| Astatula, Town of | TR-01 | Transportation Facilities | Astatula, Lake County | 08/18/1999 | N/A | Annexation of County Road 48 right-of-way |
| Clermont, City of | TR-02 | Transportation Facilities | Clermont, East Central Florida Regional Planning Council | 12/11/1998 | None Provided | Technical assistance with transportation |
| Eustis, City of | TR-04 | Transportation Facilities | Eustis, Florida Department of Transportation | 10/21/2002 | Upon Notice | Traffic signal maintenance |
| Lady Lake, Town of | TR-06 | Transportation Facilities | Lady Lake, State of Florida | 10/12/1998 | Upon Notice | Highway maintenance agreement |
| Lady Lake, Town of | TR-07 | Transportation Facilities | Lady Lake, State of Florida | 09/20/2002 | Life of original equipment or life of any replacement equipment with mutual consent of both parties | State traffic signal maintenance and compensation agreement |
| Lady Lake, Town of | TR-08 | Transportation Facilities | Lady Lake, State of Florida | 10/17/2002 | Upon Notice | State highway lighting, maintenance, FDOT, and compensation agreement |
| Lake, County of | TR-09 | Transportation Facilities | Lake County, Florida Department of Transportation | 12/20/1978 | Upon Notice | Signal maintenance |
| Lake, County of | TR-10 | Transportation Facilities | Lake County, Florida Department of Transportation | 12/19/1979 | Upon Notice | Maintain signals at railroad crossings |
| Lake, County of | TR-11 | Transportation Facilities | Lake County, Florida Department of Transportation | 04/29/1980 | Upon Notice | Maintain SR 42, SR 44 |
| Lake, County of | TR-12 | Transportation Facilities | Lake County, Florida Department of Transportation | 05/28/1980 | Upon Notice | Signal maintenance - Lake Square Mall |

| REPORTING ENTITY | AGREEMENT NUMBER | FUNCTIONAL CATEGORY | PARTIES TO AGREEMENT | EFFECTIVE DATE | EXPIRATION DATE | DESCRIPTION |
|------------------|------------------|---------------------------|--|----------------|-----------------|---|
| Lake, County of | TR-13 | Transportation Facilities | Lake County, Sumter County | 04/02/1985 | Upon Notice | Interlocal agreement relating to Cherry Rd. construction and maintenance |
| Lake, County of | TR-14 | Transportation Facilities | Lake County, Seaboard Coastline Railroad, Florida Department of Transportation | 04/18/1986 | Annual renewal | Installation of railroad crossing traffic control devices. 50% of costs borne by County & 50% by Seaboard. |
| Lake, County of | TR-15 | Transportation Facilities | Lake County, Leesburg | 01/23/1989 | N/A | Road maintenance for Main Street in Leesburg |
| Lake, County of | TR-16 | Transportation Facilities | Lake County, Clermont | 01/04/1994 | Upon Notice | Bloxam Ave. extension - Clermont |
| Lake, County of | TR-17 | Transportation Facilities | Lake County, Lady Lake | 05/02/1995 | Upon Notice | Traffic signal maintenance agreement. Signal locations: US 27/US 441 & Griffin View Dr, CR 466, Wales Plaza, and Griffin Ave. |
| Lake, County of | TR-18 | Transportation Facilities | Lake County, Tavares, Florida Central Railroad | 10/02/1996 | None | Settlement agreement - payment for repairs to Sinclair Ave RR crossing - warranted for 15 years. Assignment of 6/5/61 Crossing Agreement from County to City. |
| Lake, County of | TR-19 | Transportation Facilities | Lake County, Orange County | 11/05/1996 | Upon Notice | Interlocal agreement relating to road maintenance |
| Lake, County of | TR-20 | Transportation Facilities | Lake County, Clermont | 11/12/1996 | Upon Notice | Pitt Street and East Jacks Lake Road (CR#2-1350) |
| Lake, County of | TR-21 | Transportation Facilities | Lake County, Howey-in-the-Hills | 04/14/1997 | Upon Completion | Resurfacing of roads in the Howey-in-the-Hills area |
| Lake, County of | TR-22 | Transportation Facilities | Lake County, Florida Department of Transportation | 04/21/1997 | Upon Completion | Joint agreement for 10' wide asphalt pedestrian/bicycle pathways and bridges between area east of Lakes Blvd. & intersection of CR 500A & SR 19, approximately 2.9 miles. Also memorandum of agreement. |
| Lake, County of | TR-23 | Transportation Facilities | Lake County, Lady Lake | 04/21/1997 | Upon Completion | Resurfacing of roads in the Lady Lake area |
| Lake, County of | TR-24 | Transportation Facilities | Lake County, Clermont | 05/06/1997 | Upon Notice | Resurfacing of roads in the Clermont area |
| Lake, County of | TR-25 | Transportation Facilities | Lake County, Lady Lake | 10/07/1997 | Upon Notice | US 441/CR 25 connector project |

Intergovernmental Coordination Element
Data, Inventory & Analysis

| REPORTING ENTITY | AGREEMENT NUMBER | FUNCTIONAL CATEGORY | PARTIES TO AGREEMENT | EFFECTIVE DATE | EXPIRATION DATE | DESCRIPTION |
|------------------|------------------|---------------------------|--|----------------|-----------------|---|
| Lake, County of | TR-26 | Transportation Facilities | Lake County, Clermont | 12/02/1997 | Upon Notice | Traffic signal maintenance agreement. Nine intersections listed. Normal maintenance: \$600. Normal repair: \$27/hr during normal business hours. \$36/hr outside normal business hours. |
| Lake, County of | TR-27 | Transportation Facilities | Lake County, Florida Department of Transportation | 01/21/1998 | Upon Completion | JPA to provide assistance for the development of a 2020 Long-Range Transportation Plan. AF644 - Project #2435191401. |
| Lake, County of | TR-28 | Transportation Facilities | Lake County, Florida Department of Transportation | 04/09/1998 | Upon Completion | LAP Old US 441 sidewalk project. WPI No. 5122611. FM# 241458. |
| Lake, County of | TR-29 | Transportation Facilities | Lake County, Clermont | 05/26/1998 | Upon Notice | Resurfacing of roads in the Clermont area |
| Lake, County of | TR-30 | Transportation Facilities | Lake County, Montverde | 06/02/1998 | Upon Notice | Resurfacing of roads |
| Lake, County of | TR-31 | Transportation Facilities | Lake County, Eustis | 07/06/1999 | Upon Notice | Shared road maintenance for Morris Street (CR 3-5163) |
| Lake, County of | TR-32 | Transportation Facilities | Lake County, Orlando/Orange County Expressway Authority | 06/27/2000 | Upon Notice | Interlocal regarding the feasibility of expanding the Orlando/Orange County Expressway System into Lake County |
| Lake, County of | TR-36 | Transportation Facilities | Lake County, Florida Department of Transportation | 10/16/2001 | Upon Notice | Highway illumination services agreement. Final invoice needs to be submitted no later than 180 days after illumination services have commenced. |
| Lake, County of | TR-37 | Transportation Facilities | Lake County, Eustis | 11/07/2001 | Upon Notice | Agreement for traffic signal maintenance |
| Lake, County of | TR-38 | Transportation Facilities | Lake County, Lady Lake | 11/26/2001 | Upon Notice | Agreement for traffic signal maintenance |
| Lake, County of | TR-40 | Transportation Facilities | Lake County, Clermont | 12/18/2001 | Upon Notice | Interlocal agreement for traffic signal maintenance. \$1,500/signalized intersection and \$375/flashing beacon intersection. 3% annual increase on anniversary date. |
| Lake, County of | TR-41 | Transportation Facilities | Lake County, Florida Internal Improvement Trust Fund Board of Trustees | 01/04/2002 | None | Public road right-of-way easement |

| REPORTING ENTITY | AGREEMENT NUMBER | FUNCTIONAL CATEGORY | PARTIES TO AGREEMENT | EFFECTIVE DATE | EXPIRATION DATE | DESCRIPTION |
|-------------------|------------------|---------------------------|--|----------------|-----------------|---|
| Lake, County of | TR-42 | Transportation Facilities | Lake County, Florida Department of Transportation | 04/11/2002 | Upon Completion | Repairs for damage of Whitney Road on project concerning SR 44 from Sumter County line to CR 468. Contract No.: AL662 |
| Lake, County of | TR-43 | Transportation Facilities | Lake County, Lady Lake | 04/23/2002 | Upon Completion | Improvements to Oak Street. Town manager to sign invoices submitted to the County. Contract amount is estimated. |
| Lake, County of | TR-45 | Transportation Facilities | Lake County, Eustis | 05/21/2002 | N/A | Transfer jurisdiction of a right-of-way, on a roadway known as Lone Pine Lane, off Bates Ave., to City of Eustis |
| Lake, County of | TR-46 | Transportation Facilities | Lake County, Fruitland Park | 05/21/2002 | N/A | Interlocal for CR 466A project - development and environmental study. Funded by impact fees. |
| Lake, County of | TR-47 | Transportation Facilities | Lake County, Groveland | 05/21/2002 | N/A | This interlocal agreement sets forth the respective responsibilities of each party in the event existing piping is damaged or ruptured during paving of Sampey Road, thereby causing damage to the roadway. |
| Lake, County of | TR-52 | Transportation Facilities | Lake County, Florida Department of Transportation, Turnpike Enterprise | 11/19/2002 | Upon Notice | Memorandum of understanding to set forth the relationship between Department and County with regard to the maintenance responsibilities of the realigned CR 470 and new CR 470 bridge. |
| Lake, County of | TR-53 | Transportation Facilities | Lake County, Clermont | 12/26/2002 | None | Interlocal agreement for improvements to Oakley Seaver Boulevard. |
| Lake, County of | TR-54 | Transportation Facilities | Lake County, Lady Lake | 03/18/2003 | TBA | Project #SDY 03018 - interlocal agreement for CR 466 project development and environmental study |
| Lake, County of | TR-55 | Transportation Facilities | Lake County, Montverde | 10/07/2003 | None Provided | Interlocal agreement for sidewalk construction using CDBG funds |
| Lake, County of | TR-56 | Transportation Facilities | Lake County, Leesburg | 11/07/2003 | 11/07/2010 | Interlocal agreement for traffic signal maintenance |
| Leesburg, City of | TR-57 | Transportation Facilities | Leesburg, Fruitland Park | 09/28/1988 | Upon Notice | Interlocal agreement relating to the maintenance of traffic signals in the City of Fruitland Park - U.S. 27 & Palm and Rose & Miller |

Intergovernmental Coordination Element
Data, Inventory & Analysis

| REPORTING ENTITY | AGREEMENT NUMBER | FUNCTIONAL CATEGORY | PARTIES TO AGREEMENT | EFFECTIVE DATE | EXPIRATION DATE | DESCRIPTION |
|---------------------|------------------|---------------------------|--|----------------|----------------------------|--|
| Leesburg, City of | TR-58 | Transportation Facilities | Lake County, Leesburg | 10/03/2003 | Upon Notice | Interlocal agreement relating to improvements to the Main Street Area |
| Mount Dora, City of | TR-59 | Transportation Facilities | Mount Dora, Eustis | 03/21/1986 | Upon Removal or Alteration | Maintenance of traffic control device at the intersection of Eudora Road and U.S. 441 |
| Mount Dora, City of | TR-60 | Transportation Facilities | Mount Dora, Florida Department of Transportation | 10/07/2003 | Upon Notice | State highway lighting, maintenance, and compensation agreement |
| Tavares, City of | TR-61 | Transportation Facilities | Tavares, Florida Department of Transportation | 01/03/1996 | Upon Notice | Lighting agreement (per Res. 96-01) |
| Tavares, City of | TR-62 | Transportation Facilities | Tavares, Leesburg | 07/13/1998 | Upon Notice | Traffic signal maintenance agreement (per Leesburg Res. 5473) |
| Tavares, City of | TR-63 | Transportation Facilities | Tavares, Florida Department of Transportation | 05/05/1999 | Upon Notice | Highway lighting agreement (per Res. 99-07 & 99-11). |
| Tavares, City of | TR-64 | Transportation Facilities | Tavares, Florida Department of Transportation | 05/21/1999 | Upon Notice | Highway lighting maintenance agreement |
| Tavares, City of | TR-65 | Transportation Facilities | Lake County, Tavares | 07/12/2000 | Upon Notice | Interlocal transferring of roads & responsibility of maintenance to Tavares: Milwaukee Ave., Sunset Ct., Sunshine Ln., & Sunrise Ct. |
| Tavares, City of | TR-66 | Transportation Facilities | Tavares, Florida Department of Transportation | 07/27/2000 | Upon Notice | Highway lighting maintenance agreement |
| Tavares, City of | TR-67 | Transportation Facilities | Tavares, Florida Department of Transportation | 02/21/2001 | Upon Notice | Illumination service maintenance agreement |
| Tavares, City of | TR-68 | Transportation Facilities | Tavares, Florida Department of Transportation | 05/20/2002 | Upon Notice | Traffic signal maintenance and compensation agreement |
| Tavares, City of | TR-69 | Transportation Facilities | Tavares, Florida Department of Transportation | 09/26/2002 | Upon Notice | Traffic signal maintenance and compensation agreement |

| REPORTING ENTITY | AGREEMENT NUMBER | FUNCTIONAL CATEGORY | PARTIES TO AGREEMENT | EFFECTIVE DATE | EXPIRATION DATE | DESCRIPTION |
|-------------------|------------------|---------------------------|---|----------------|----------------------------|---|
| Tavares, City of | TR-70 | Transportation Facilities | Tavares, Florida Department of Transportation | 03/24/2003 | Upon Notice | Adjustment of utilities/utility work schedule |
| Tavares, City of | TR-71 | Transportation Facilities | Tavares, Florida Department of Transportation | 08/05/2003 | Upon Notice | Joint participation agreement regarding landscaping improvements |
| Tavares, City of | TR-72 | Transportation Facilities | Tavares, Lake County | 09/02/2003 | Upon Notice | Landscaping project along State Road 19 |
| Tavares, City of | TR-73 | Transportation Facilities | Tavares, Lake County | 10/14/2003 | None Provided | CDBG agreement relating to downtown sidewalks |
| Tavares, City of | TR-74 | Transportation Facilities | Tavares, Florida Department of Transportation | 10/27/2003 | Upon Notice | Highway lighting maintenance agreement |
| Umatilla, City of | TR-75 | Transportation Facilities | Lake County, Umatilla | 06/28/2002 | None | County purchased Abrahamson and Sagis property on west side of C-44A (at end of Umatilla Airport runway); City to continue to apply for FDOT grants that would be used to purchase the property from the County |
| Umatilla, City of | TR-76 | Transportation Facilities | Lake County, Umatilla | 10/01/2002 | Upon completion of project | Lake County designated Trowell Avenue as a collector road and funded roadway improvements to piggy-back with a CDBG stormwater improvement project awarded to the City. Roadway was built to County specifications, with the City responsible for the bidding process, construction management, and keeping the project within a budget of \$244,943. |
| Umatilla, City of | TR-77 | Transportation Facilities | Umatilla, School Board of Lake County | 10/07/2003 | Pending from School Board | Umatilla High School is utilizing the High School Annex during construction activity at the main campus. City will allow School Board to install barrier gates for partial closure of Trowell Ave. and Lone Star St. to allow safe crossing for students during class changes during the construction period. School Board is responsible for closing/opening the barriers, signage, and monitoring during class changes. |

APPENDIX A

LAKE COUNTY PUBLIC SAFETY CHARTS AND MAP

LAKE COUNTY FIRE RESCUE MUTUAL SUPPORT AGREEMENTS

| CITY/TOWN | County Provided Fire Support | City/Town Manned Fire Department | Volunteer Fire Department | Mutual Support Agreement |
|--------------------------------------|------------------------------|----------------------------------|---------------------------|--------------------------|
| <u>1. Town of Astatula</u> | X | | | X |
| <u>2. City of Clermont</u> | | X | | X |
| <u>3. City of Eustis</u> | | X | | X |
| <u>4. City of Fruitland Park</u> | | | X | X |
| <u>5. City of Groveland</u> | | X | | X |
| <u>6. Town of Howey-in-the-Hills</u> | X | | | X |
| <u>7. Town of Lady Lake</u> | X | | | X |
| <u>8. City of Leesburg</u> | | X | | X |
| <u>9. City of Mascotte</u> | | X | | X |
| <u>10. City of Minneola</u> | | X | | X |
| <u>11. Town of Montverde</u> | | | X | X |
| <u>12. City of Mount Dora</u> | | X | | X |
| <u>13. City of Tavares</u> | | X | | X |
| <u>14. City of Umatilla</u> | | | X | X |

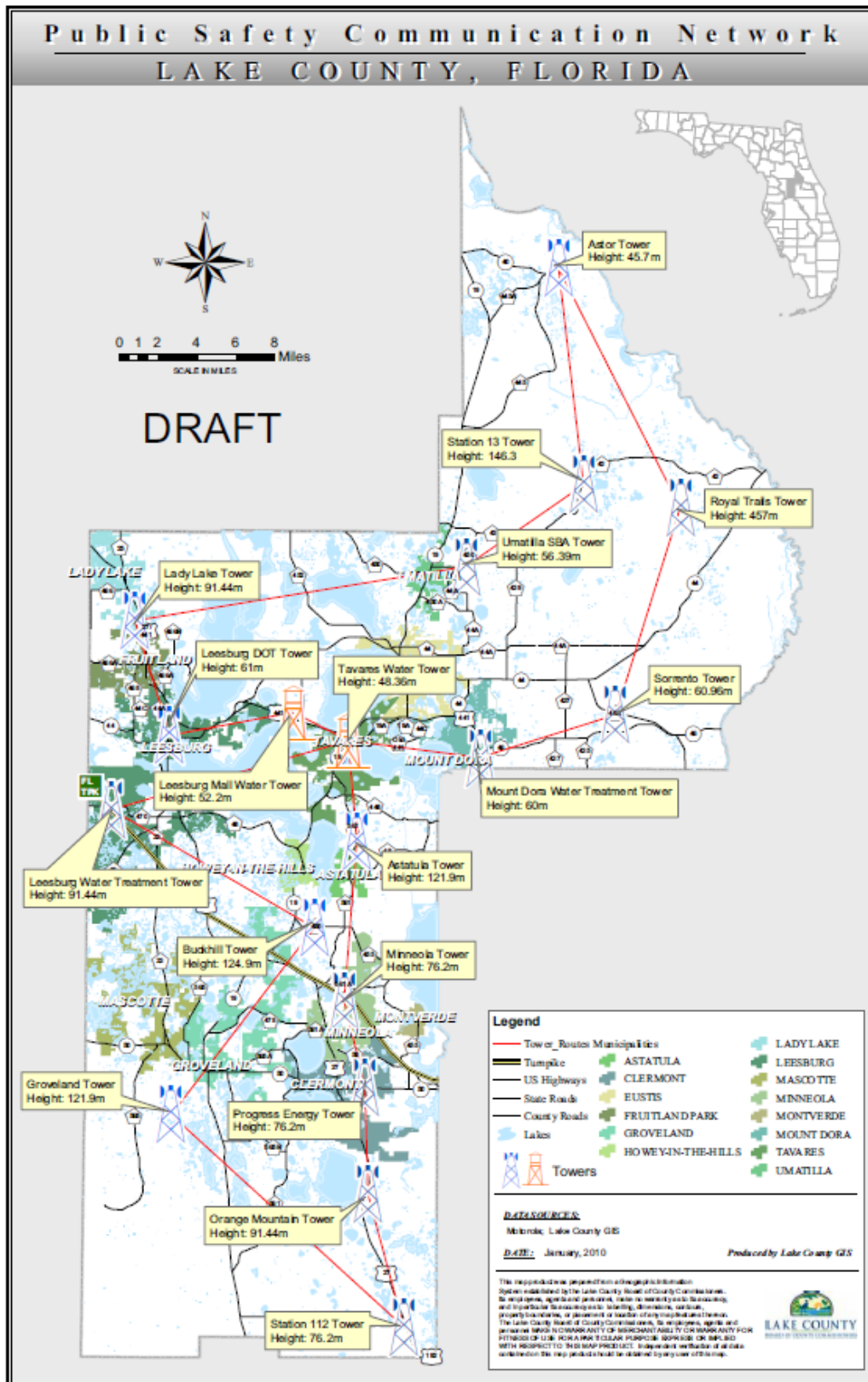
LAKE COUNTY FIRE RESCUE STAFFED STATIONS

| Station Number | Address | Area |
|--|---------------------------------------|-----------------------|
| <u>10 (ALS)</u> | 23023 State Road 40, Astor | Astor |
| 13 | 25250 County Road 42, Paisley | |
| <u>14</u> | 42700 State Road 19, Altoona | Altoona |
| <u>15 (ALS)</u> | 40601 Palm Drive, Eustis | Pine Lakes |
| 19 | 38816 Carroll St., Umatilla | |
| <u>21 (ALS)</u> | 25100 County Road 44A, Eustis | Black Bear |
| <u>27 (ALS)</u> | 19212 County Road 44B, Eustis | Eustis Airport |
| <u>39 (ALS)</u> | 31431 Walton Heath, Sorrento | Sorrento/Mt. Plymouth |
| <u>52</u> | 306 W. Hermosa St., Lady Lake | Lady Lake |
| <u>53</u> | 2505 Spring Lake Road, Fruitland Park | Spring Lake |
| <u>54</u> | 6200 Lake Griffin Road, Lady Lake | Harbor Hills |
| 70 (Training Facility) | 531 Sunnyside Drive, Leesburg | |
| <u>71</u> | 11305 Park Ave., Leesburg | Bassville Park |
| <u>72 (ALS) (SORT) (BC 20)</u> | 12340 County Road 44, Leesburg | Grand Island |
| <u>76 (SORT)</u> | 8819 State Road 48, Yalaha | Yalaha |

| Station Number | Address | Area |
|--|--|-----------------------|
| 77 (Fire Maintenance Facility) | 25028 Kirkwood Ave., Astatula | |
| <u>78 (ALS)</u> | 16345 CR 448, Mount Dora | Lake Jem |
| <u>82 (ALS)</u> | 24939 U.S. Highway 27, Leesburg | Plantation |
| <u>83 (ALS)</u> | 15303 Ferndale Community Road, Clermont | Ferndale |
| 90 (ALS) (BC 90) | 16311 State Road 50, Clermont | East Clermont |
| <u>109 (ALS)(SORT)</u> | 11630 Lakeshore Drive, Clermont | South Lake |
| 110 | 6234 County Road 561, Clermont | South Clermont |
| <u>111</u> | 8805 Bay Lake Road, Groveland | Bay Lake |
| <u>112 (ALS)</u> | 16240 County Road 474, Clermont | Four Corners |
| Fire Rescue Supply (Station 20) | 37711 State Road 19 | |

| | | |
|-----------------------------------|-----------------------|---------------------|
| MUNICIPAL STAFFED STATIONS | | |
| City of Clarmont: 3 | City of Mascotte: 1 | City of Tavares: 1 |
| City of Eustis: 1 | City of Minneola: 1 | City of Leesburg: 1 |
| City of Groveland: 1 | City of Mount Dora: 1 | |

Public Safety Communication Network Map



APPENDIX B

UNITED STATES OF AMERICA DEPARTMENT OF THE NAVY - DATA AND MAPS

History and Mission



Pinecastle Range

History and Mission

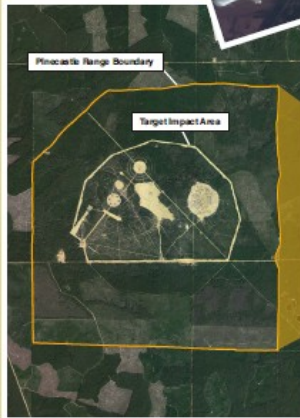
Current Operations

Unit-Level Training

- Normal, single aircraft operation
- Up to 170 days per year

Major Training Exercise

- Battle Group Operation (Multiple Units Training)
- 2-3 weeks per exercise, 3-4 exercises per year



History

- Established in 1951 within Ocala National Forest.
- 5,698 acres (1% of the Ocala National Forest).
- Continuous use for 58 years.
- The Navy operates under a Special Use Permit issued by the U.S. Forest Service, which was renewed after the 2002 Environmental Impact Statement was completed.
- This permit outlines the management roles and responsibilities and contains mitigation measures to ensure public safety and safeguard the environment.



Mission

- Strategic asset to homeland defense and homeland security.
- Only U.S. East Coast Navy training facility authorized for use of air-to-ground live ordnance.
- Use of air-to-ground ranges are a critical part of pre-deployment training.
- Supports routine aircraft and helicopter training events.
- Also supports training exercises with multiple aircraft flying from ships off the southeast coast.



No changes to existing operations, targets, or weapons are planned.

Your involvement assists the Navy in making an informed decision. Thank you for your participation.
For future updates, please visit the project website at: www.pinecastleseis.com

Environmental Analysis



Pinecastle Range | Environmental Analysis

Overview

- The SEIS analyzed each environmental resource area discussed in the 2002 EIS.
- The SEIS determined that the following resource areas could be potentially impacted by a larger Safety Zone.
 - Range Safety
 - Land Use and Recreation
 - Wetlands
 - Surface Water
 - Vegetation and Wildlife
 - Threatened and Endangered Species

Impact Assessment

- Potential impacts would occur only if ordnance landed outside the target impact area.
- Off-range ordnance impacts are not considered likely. In the last 30 years, 3 bombs have landed outside the Range; however, all were contained by the designated Safety Zone.
- The analysis determined that no significant impacts to the resource areas are expected or forecasted.
- The Safety Zone contains only small percentages of total wetlands, waterbodies, and threatened and endangered species habitat within the Ocala National Forest.

Threatened and Endangered Species

- Potential habitat exists throughout the entire Ocala National Forest for the following threatened and endangered species:
 - Eastern Indigo Snake
 - Lewton's Polygala
 - Florida Bonamia
 - Scrub Buckwheat
- For these species only 5% of the potential habitat within Ocala National Forest occurs in the Safety Zone.
- For Sand Skink and Scrub Jay there is a higher percentage of total potential habitat that occurs within the Safety Zone compared to other threatened and endangered species.
- Through consultation with the U.S. Forest Service and U.S. Fish and Wildlife Service it has been determined that the project is unlikely to effect threatened or endangered species or their habitat.

Wetlands, Waterbodies, and Threatened and Endangered Species within the 2009 Major Training Exercise Safety Zone of the Ocala National Forest



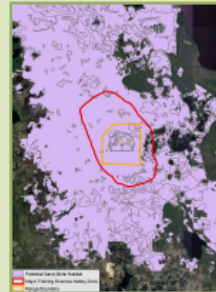
Only 0.3% of wetlands within the Ocala National Forest occurs in the Safety Zone.



Only 0.3% of waterbodies within the Ocala National Forest occurs in the Safety Zone.



Only 9.8% of potential Scrub Jay habitat within the Ocala National Forest occurs in the Safety Zone.



Only 7.0% of potential Sand Skink habitat within the Ocala National Forest occurs in the Safety Zone.



Your involvement assists the Navy in making an informed decision. Thank you for your participation.
 For future updates, please visit the project website at: www.pinecastleseis.com

Changes



Pinecastle Range

What Has Changed?

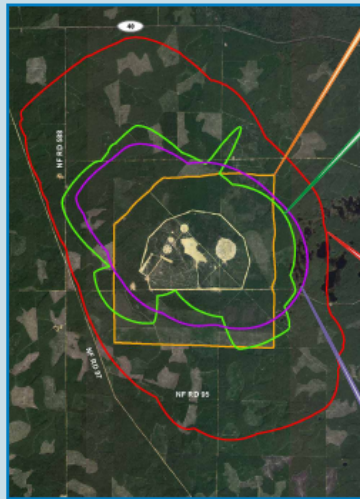
Primary Change

SAFE-RANGE

Since the completion of the 2002 Environmental Impact Statement (EIS), the Navy has adopted a new safety modeling program (known as SAFE-RANGE).

- SAFE-RANGE is a more technologically advanced program for determining Safety Zones.
- Safety Zones are developed to ensure the safety of the public and ground-based personnel and safeguard the environment.
- SAFE-RANGE uses more site specific information to increase the precision of the Pinecastle Safety Zones. Examples include:
 - direction of approach to the range
 - the type of aircraft
 - the type of ordnance
 - etc.
- The size and shape of the Safety Zone is different depending on whether Unit Level Training or Major Training Exercises are occurring.

These safety zones define the area of greatest potential safety hazard



Pinecastle Range Boundary
(5,698 acres)
(No Change)

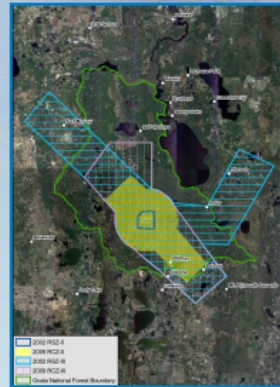
2009 Unit Level Training Safety Zone
Would be in effect portions of 170 days per year.
What changed:
Total acreage increased by 682 acres over the 2002 EIS Safety Zone (increased off-range by 629 acres).

2009 Major Training Exercise Safety Zone
Would be in effect portions of 20-32 days per year.
What changed:
Total acreage increased by 12,442 acres over the 2002 EIS Safety Zone (increased off-range by 11,366 acres).

2002 EIS Safety Zone
Extends 1,950 acres off range.

Related Changes

- The overflight zones, related to target identification (Zone II) and tactical maneuvering (Zone III), are now better defined for the Pinecastle Range.
- No munition impacts occur in these overflight zones.
- The Navy recommends limited future development within these overflight zones.
- It is up to County Planning Departments to implement the Navy's recommendations.



Your involvement assists the Navy in making an informed decision. Thank you for your participation.
For future updates, please visit the project website at: www.pinecastleseis.com

Public Safety



Pinecastle Range

Public Safety

Bombing Range Remains Closed for Public Use

- Greater than 99% of weapons hit the intended target.
- Very unlikely that munitions will land outside of the Range boundary (only 3 landed outside Range boundary in last 30 years).
- All 3 were within the designated Safety Zone

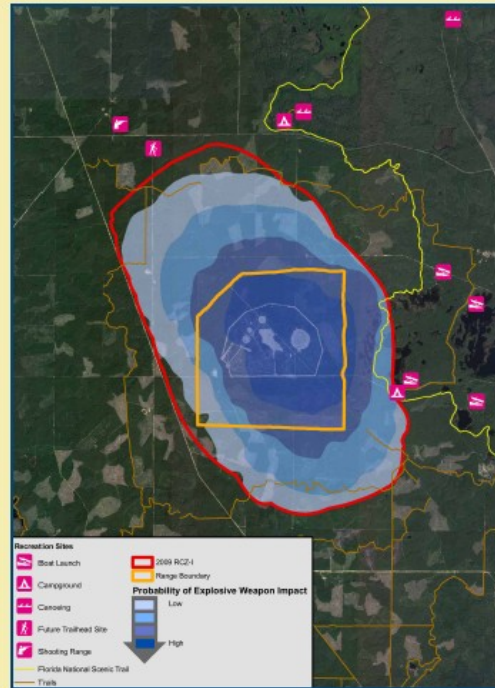
Public Use Within Safety Zone

Recreational opportunities exist in Ocala National Forest within the Safety Zone:

- Hiking
- Hunting
- Horseback riding
- Primitive camping
- All-terrain/Off-highway vehicles

These recreational opportunities typically do not result in large gatherings of people such as with team sports or picnic areas.

To protect public safety, additional preventive measures were identified.



Protection of Public Safety

Existing Safety Measures

- Public announcements
- Public outreach
- Cooperation with U.S. Forest Service
- Signs
- Gates
- Look-outs
- Road guards



Proposed Safety Measures

- Additional road guards along the Florida National Scenic Trail.
- Enhance education of U.S. Forest Service staff to help ensure implementation of safety measures.
- Conduct awareness training when permits (e.g., hunting) are issued.

Cooperation and Communication are Key to Maintaining Public Safety

Your involvement assists the Navy in making an informed decision. Thank you for your participation.
 For future updates, please visit the project website at: www.pinecastleseis.com

Public Involvement



Pinecastle Range

Public Involvement

Background

- In 2002, in accordance with the National Environmental Policy Act (NEPA), the Navy conducted an environmental study - called an **Environmental Impact Statement (EIS)** - that examined the potential impacts of continuing training operations at the Pinecastle Range within the Ocala National Forest.
- The 2002 EIS studied the potential impacts of aircraft operations and ordnance delivery on the natural and human environment including water quality, noise, vegetation and wildlife, and surrounding land uses.
- In the summer of 2002, the U.S. Forest Service issued a permit to the Navy allowing these training operations to continue for the next 20 years at the Pinecastle Range.
- In the summer of 2008, the Navy began a **Supplemental Environmental Impact Statement (SEIS)**. This SEIS focuses on changes made after the 2002 study to the Pinecastle Range Safety Zones.
- The purpose of the SEIS is to determine if additional measures are needed to ensure public safety and to safeguard the environment as a result of changes to the Pinecastle Range Safety Zones.
- The Navy is not proposing any changes to existing operations, targets, or weapons utilized at the Pinecastle Range.



Submit Your Comments

Your involvement and feedback will help the Navy make an informed decision on the proposed action.

1. Provide comments orally today at the Public Hearing
2. Submit a comment card provided here today at the Public Hearing
3. Submit comments online at www.pinecastleseis.com
4. Submit written comments and mail them to:
**Naval Facilities Engineering Command Southeast
Attn: Pinecastle SEIS Project Manager, Code EV21
P.O. Box 30 Building 903
NAS Jacksonville, Jacksonville, Florida 32212-0030**
5. Submit comments using computers available at today's Public Hearing
6. Submit comments by facsimile to:
**Pinecastle SEIS Project Manager, Code EV21
1-904-542-6345**



The **comment period ends on October 19, 2009**. Please submit your comments by that date to ensure they are considered in the Final SEIS.

Completing the NEPA Process

The **Final SEIS** will include:

- Responses to public comments
- Any additional information, and
- Measures to ensure public safety and safeguard the environment

Record of Decision:

- Final decision document
- Published in the Federal Register and local newspapers

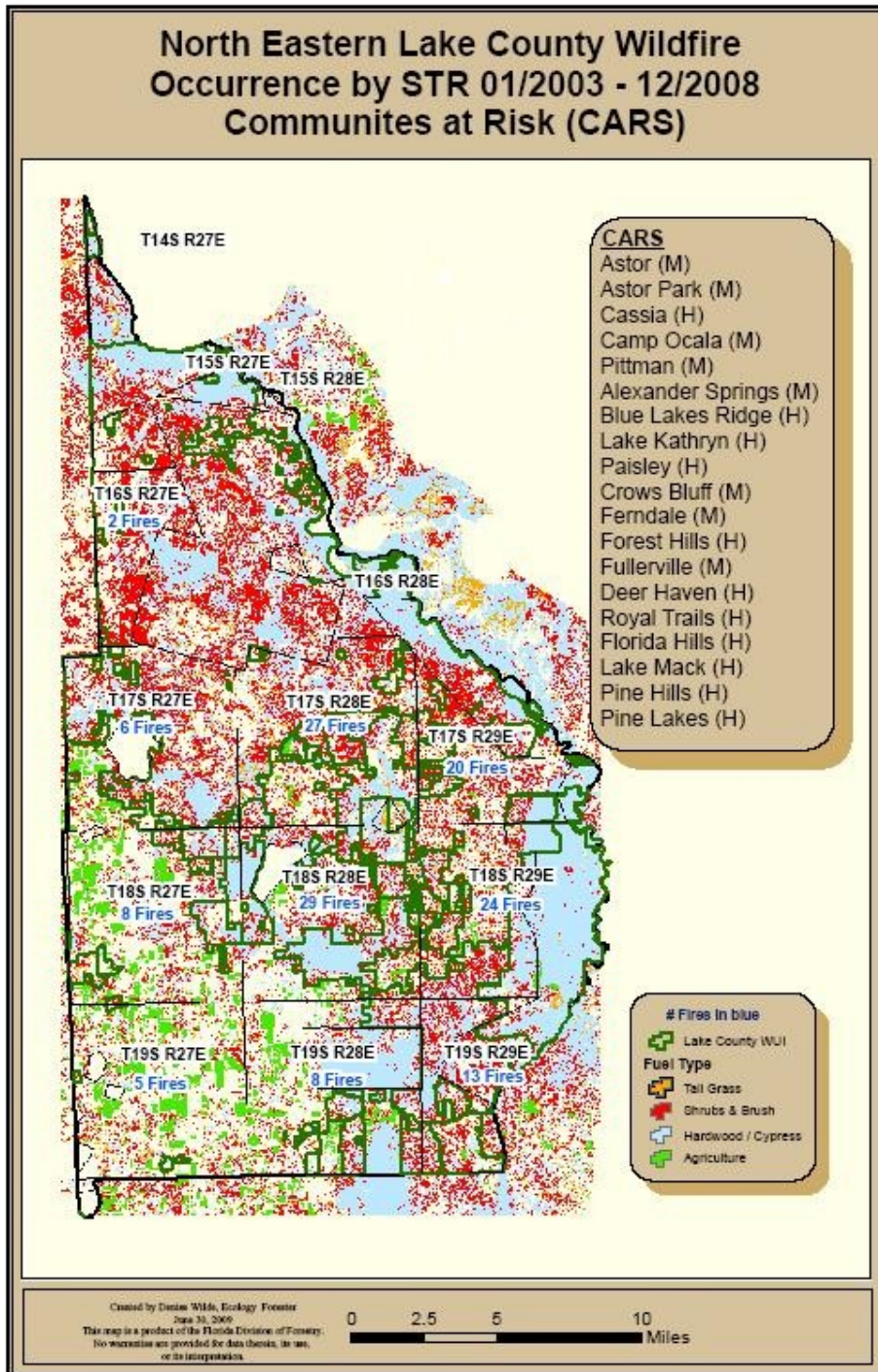
Your involvement assists the Navy in making an informed decision. Thank you for your participation.

For future updates, please visit the project website at: www.pinecastleseis.com

APPENDIX C

WILDFIRE OCCURRENCE MAPS

North Eastern Lake County Wildfire Occurrence Map



Central Lake County Wildfire Occurrence Map

